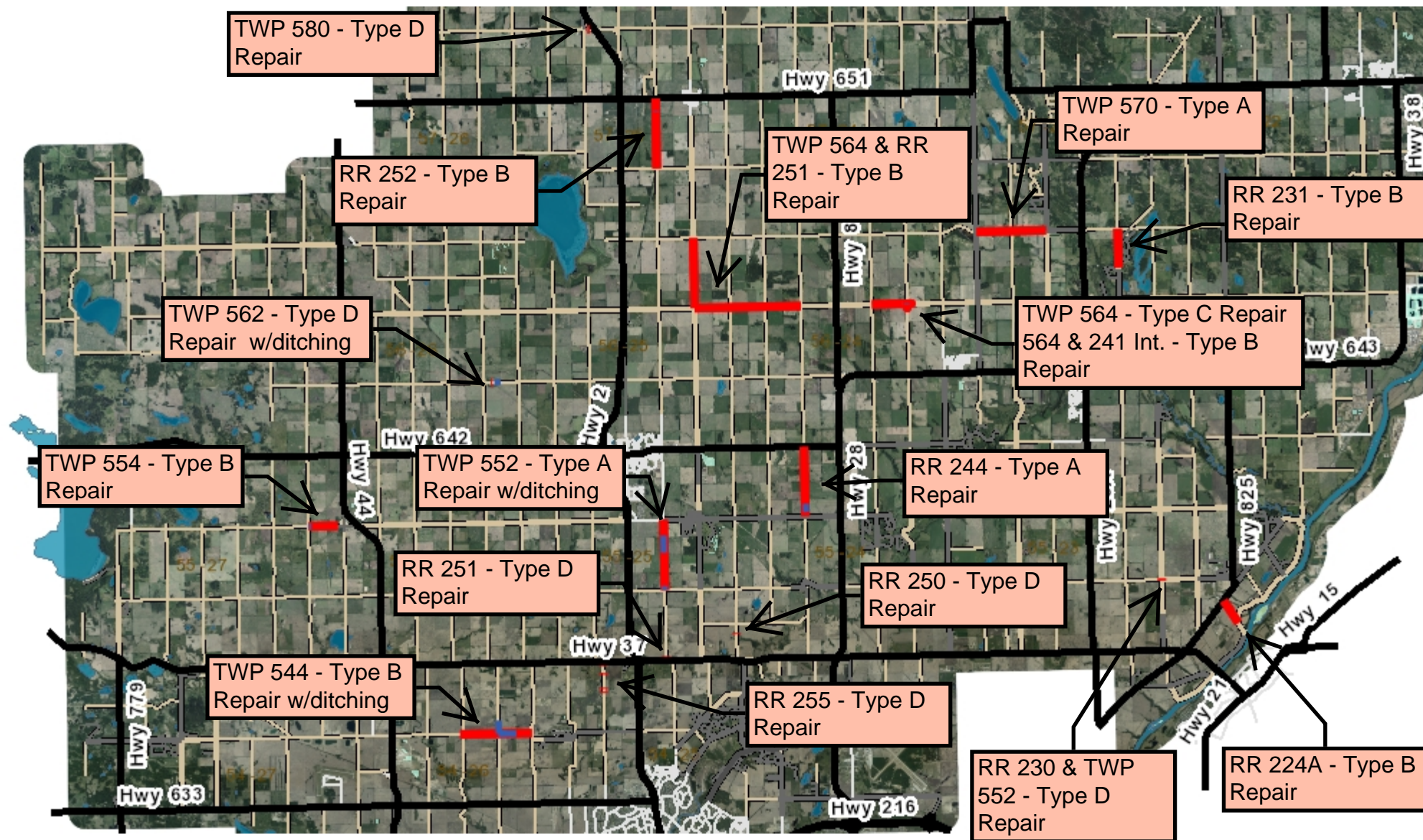


# 2021 Gravel Road Stabilization Projects

Attachment 1

Repair Types Identified

16-Jun-2021



Information on this map is provided solely for the user's information and, while thought to be accurate, is provided strictly "as is" and without warranty of any kind.

NAD\_1983\_10TM\_AEP\_Resource  
© Sturgeon County

Prepared By: Transportation & Engineering Services

