

Emergency Bridge Replacement

Attachment 2

54227 RR 263

23-Apr-2021



Information on this map is provided solely for the user's information and, while thought to be accurate, is provided strictly "as is" and without warranty of any kind.

NAD_1983_10TM_AEP_Resource
© Sturgeon County

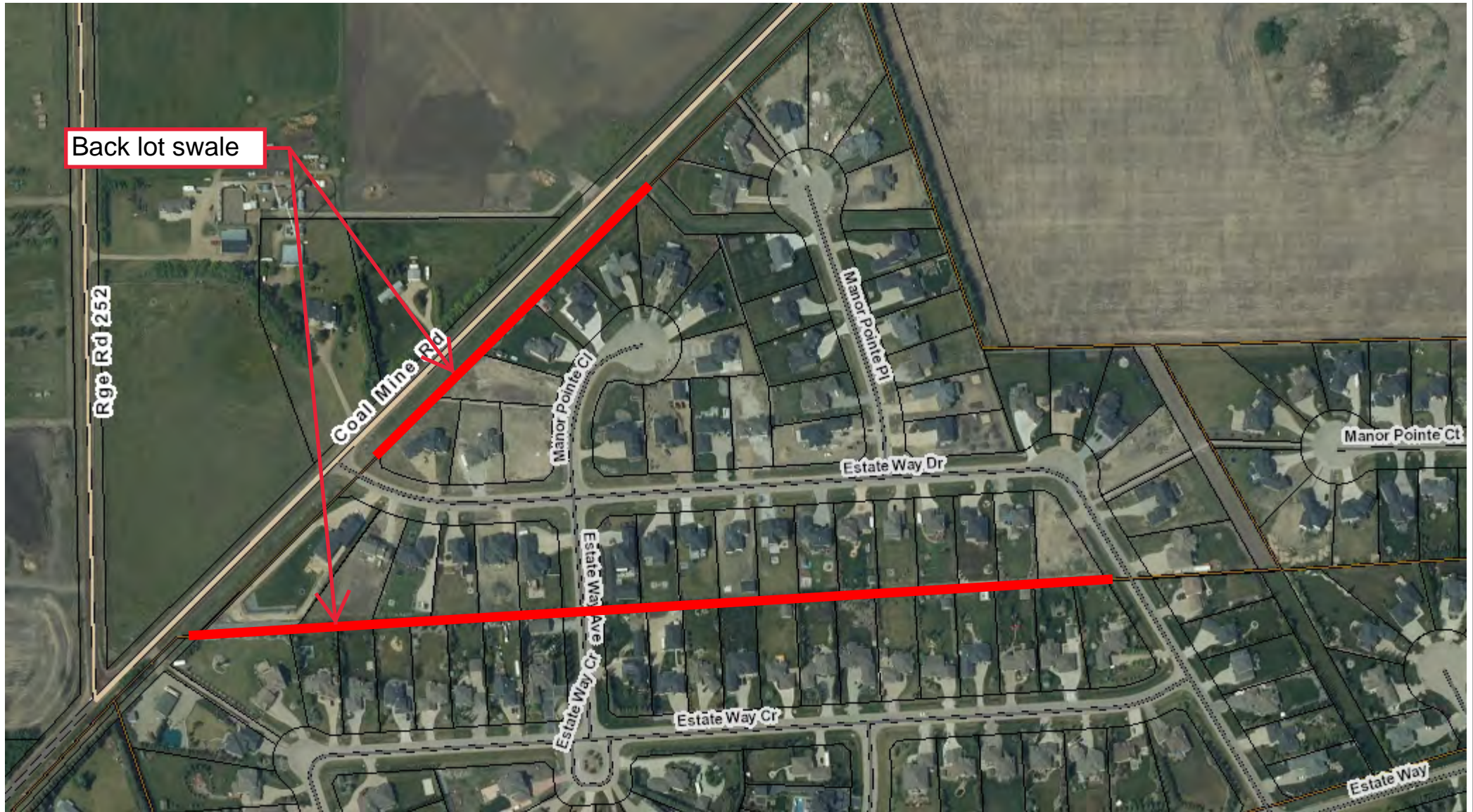
Prepared By: Ty Fergel



Upper Manor Pointe

Back Lot Swale

23-Apr-2021



Information on this map is provided solely for the user's information and, while thought to be accurate, is provided strictly "as is" and without warranty of any kind.

NAD_1983_10TM_AEP_Resource
© Sturgeon County

Prepared By: Ty Fergel



NW-31-55-22-W4 & NE-31-55-22-W4

19-Oct-2020



100
STURGEON COUNTY
1918 • 2018

Meadowview Dr

Poorest Condition Areas

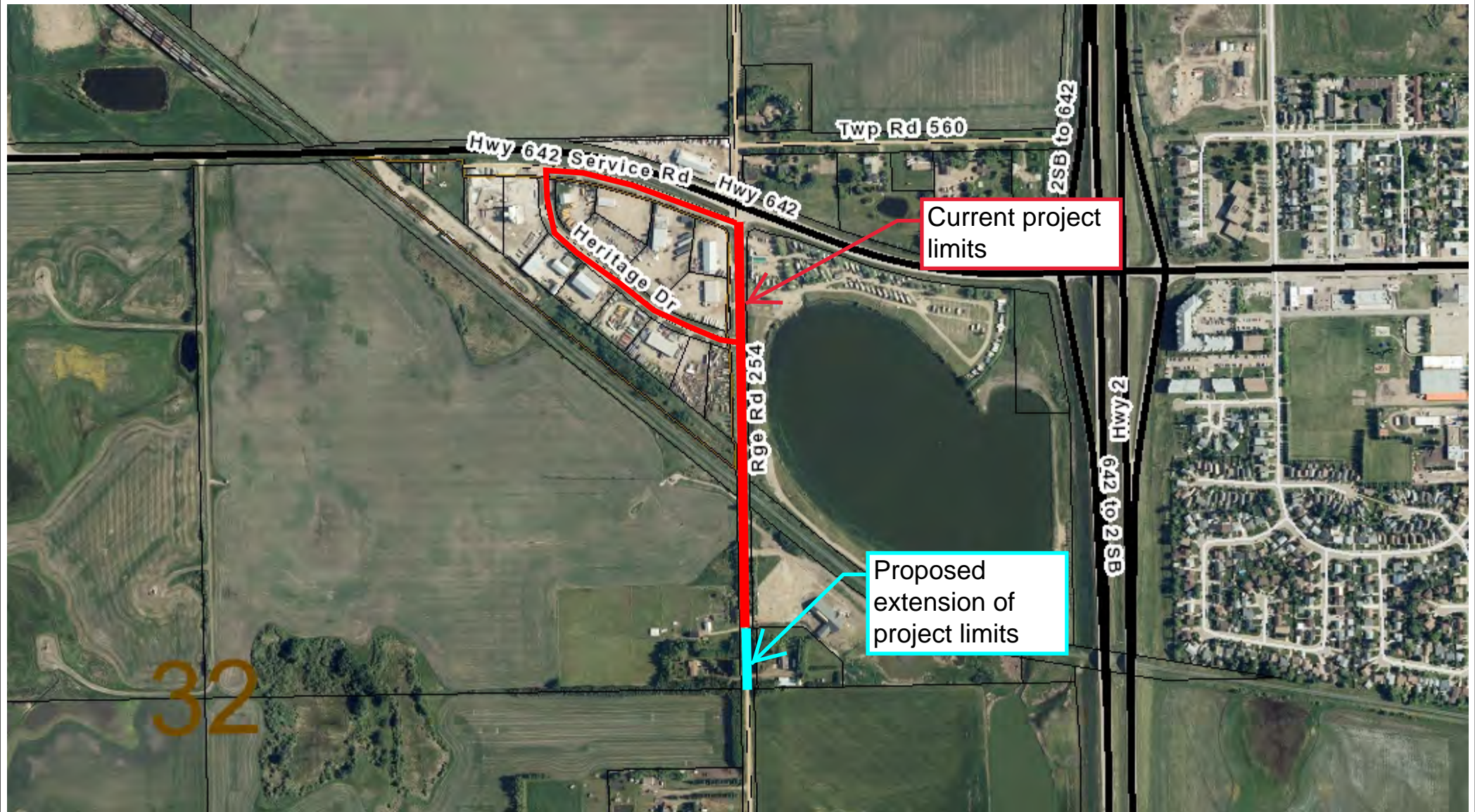
4-Nov-2020



Reconstruction Projects

Rge Rd 254 Extension

23-Apr-2021



Information on this map is provided solely for the user's information and, while thought to be accurate, is provided strictly "as is" and without warranty of any kind.

NAD_1983_10TM_AEP_Resource
© Sturgeon County

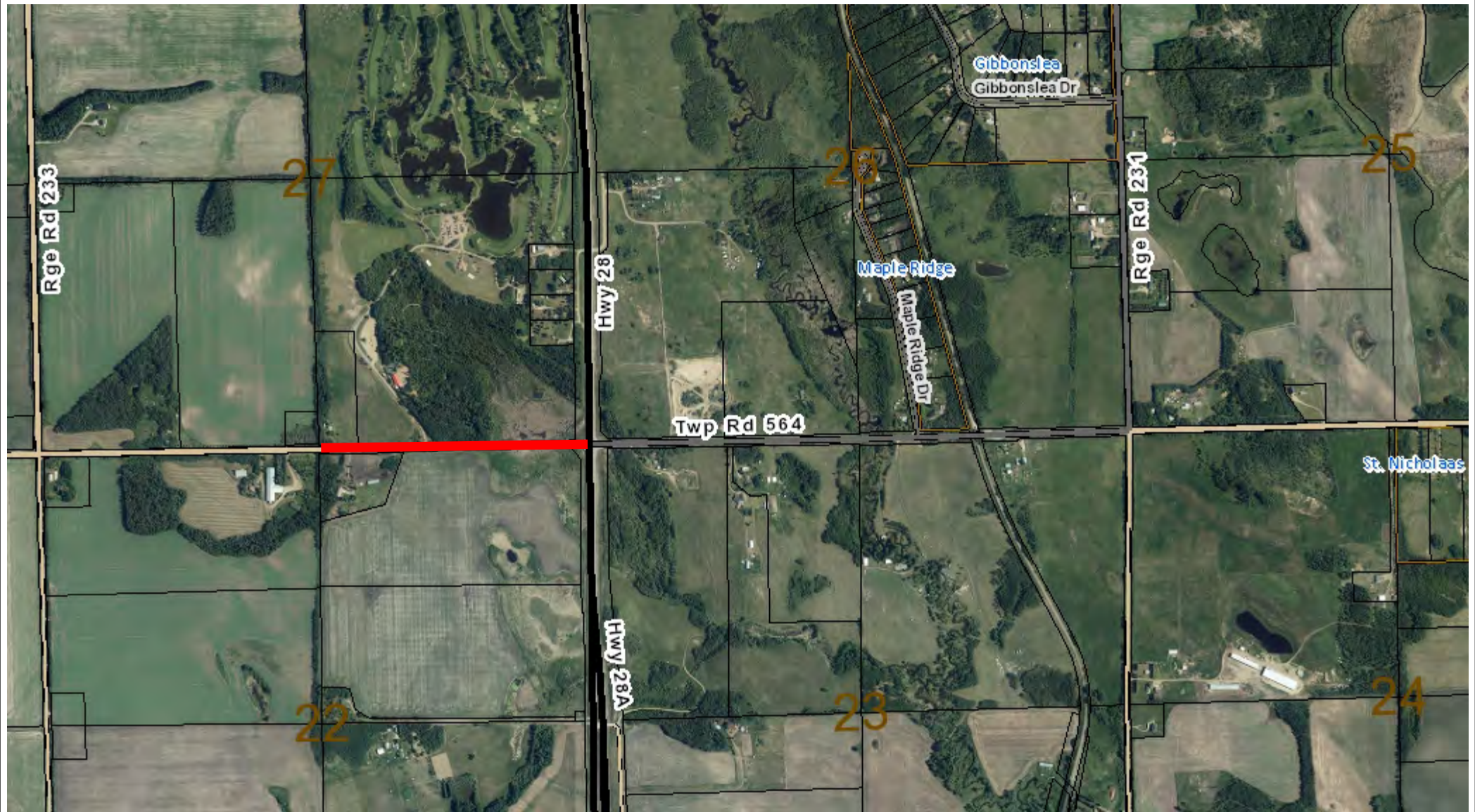
Prepared By: Ty Fergel



Project Engineering

Goose Hummock to Highway 28

23-Apr-2021



Information on this map is provided solely for the user's information and, while thought to be accurate, is provided strictly "as is" and without warranty of any kind.

NAD_1983_10TM_AEP_Resource
© Sturgeon County

Prepared By: Ty Fergel



Project Engineering

Cardiff Road Rehabilitation

23-Apr-2021



Information on this map is provided solely for the user's information and, while thought to be accurate, is provided strictly "as is" and without warranty of any kind.

NAD_1983_10TM_AEP_Resource
© Sturgeon County

Prepared By: Ty Fergel



Project Engineering

Pro North Subdivision Roads

23-Apr-2021



Information on this map is provided solely for the user's information and, while thought to be accurate, is provided strictly "as is" and without warranty of any kind.

NAD_1983_10TM_AEP_Resource
© Sturgeon County

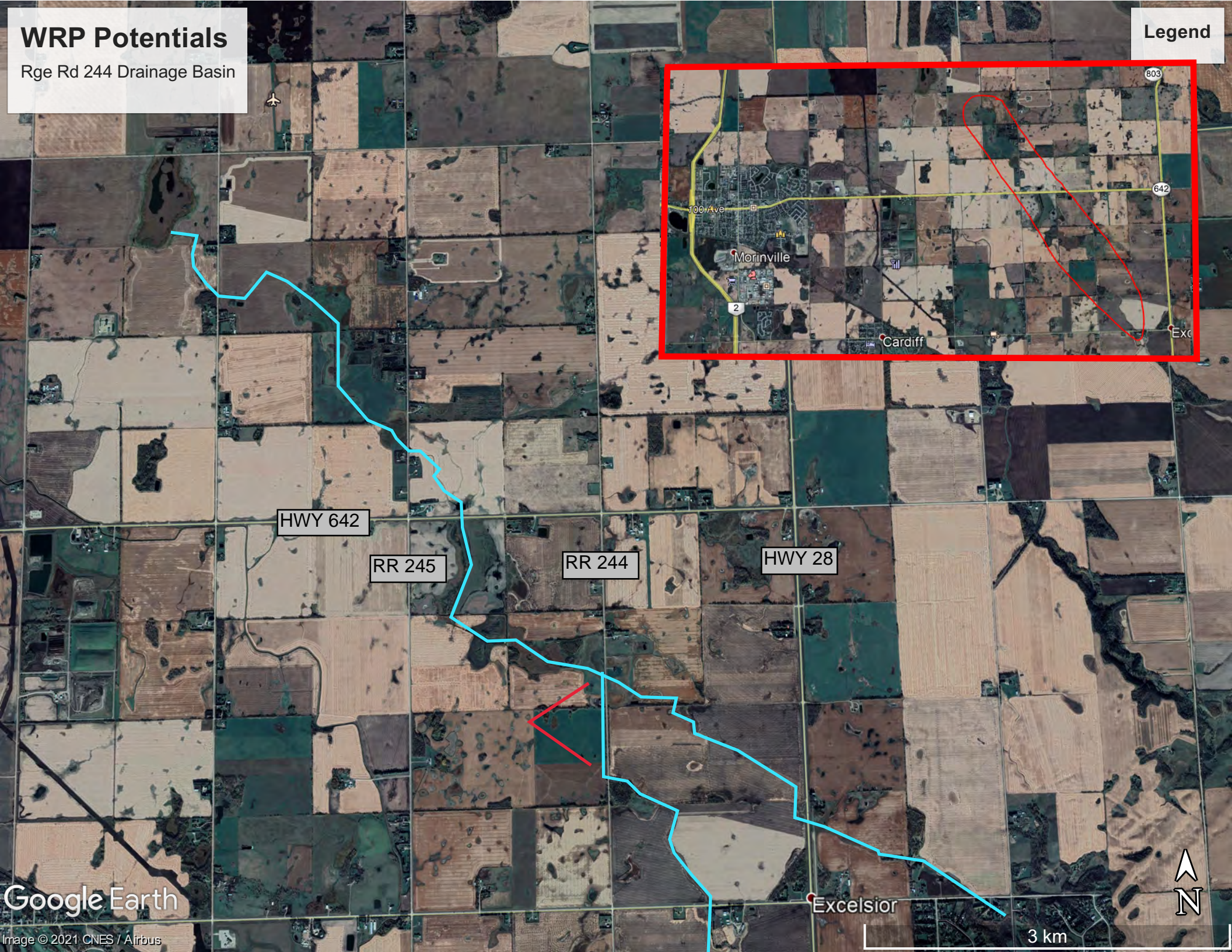
Prepared By: Ty Fergel



WRP Potentials

Rge Rd 244 Drainage Basin

Legend



Google Earth

Image © 2021 CNES / Airbus

3 km

Project Engineering

Feasibility Sturgeon Industrial Park Drainage

23-Apr-2021



Information on this map is provided solely for the user's information and, while thought to be accurate, is provided strictly "as is" and without warranty of any kind.

NAD_1983_10TM_AEP_Resource
© Sturgeon County

Prepared By: Ty Fergel



RGE RD 234 DRAINAGE



RGE RD 234

TWP RD 552

2021
Proposed
Engineering

2021 On Track
Collaboration
Project

2020 On Track
Collaboration
Project

RGE RD 233
DRAINAGE
PROJECT

2021 Drainage
Project

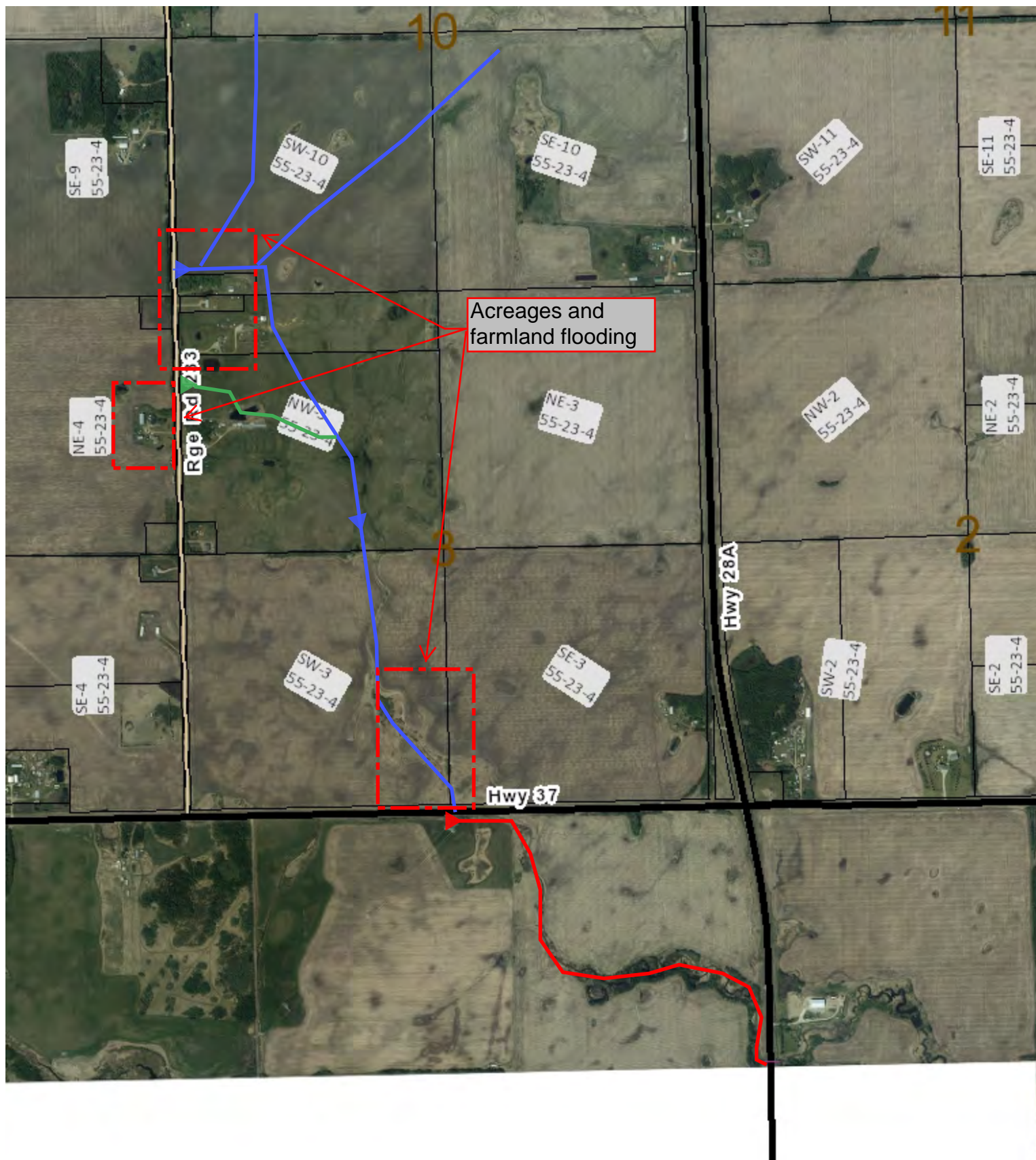
HWY 37



LG Drainage Rehabilitation

RR 233 N Hwy 37

23-Mar-2021



Prepared By: Devin Patterson

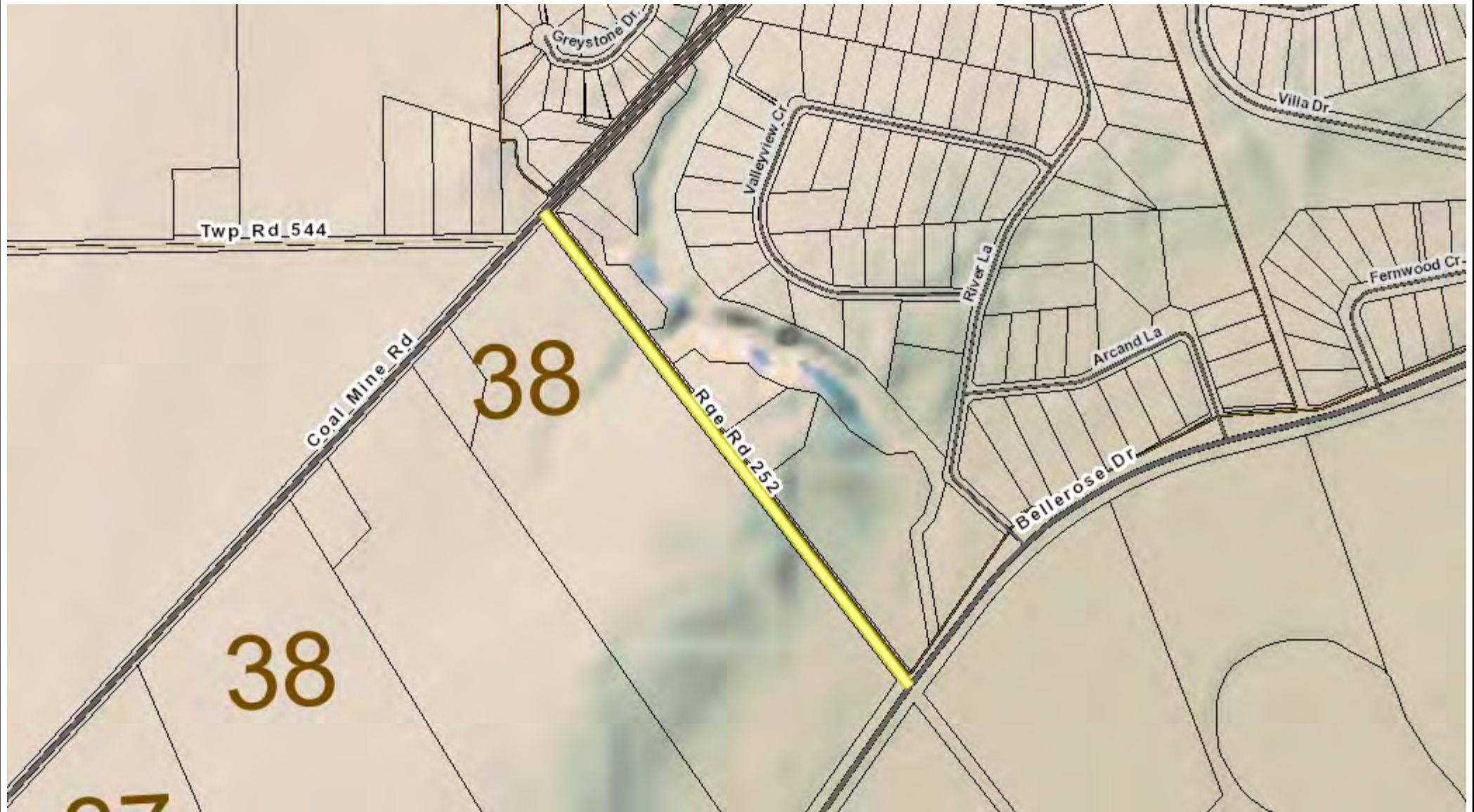
NAD_1983_10TM_AEP_Resource
© Sturgeon County

Information on this map is provided solely for the user's information and, while thought to be accurate, is provided strictly "as is" and without warranty of any kind.



Range Road 252

21-Apr-2021



Information on this map is provided solely for the user's information and, while thought to be accurate, is provided strictly "as is" and without warranty of any kind.

NAD_1983_10TM_AEP_Resource
© Sturgeon County

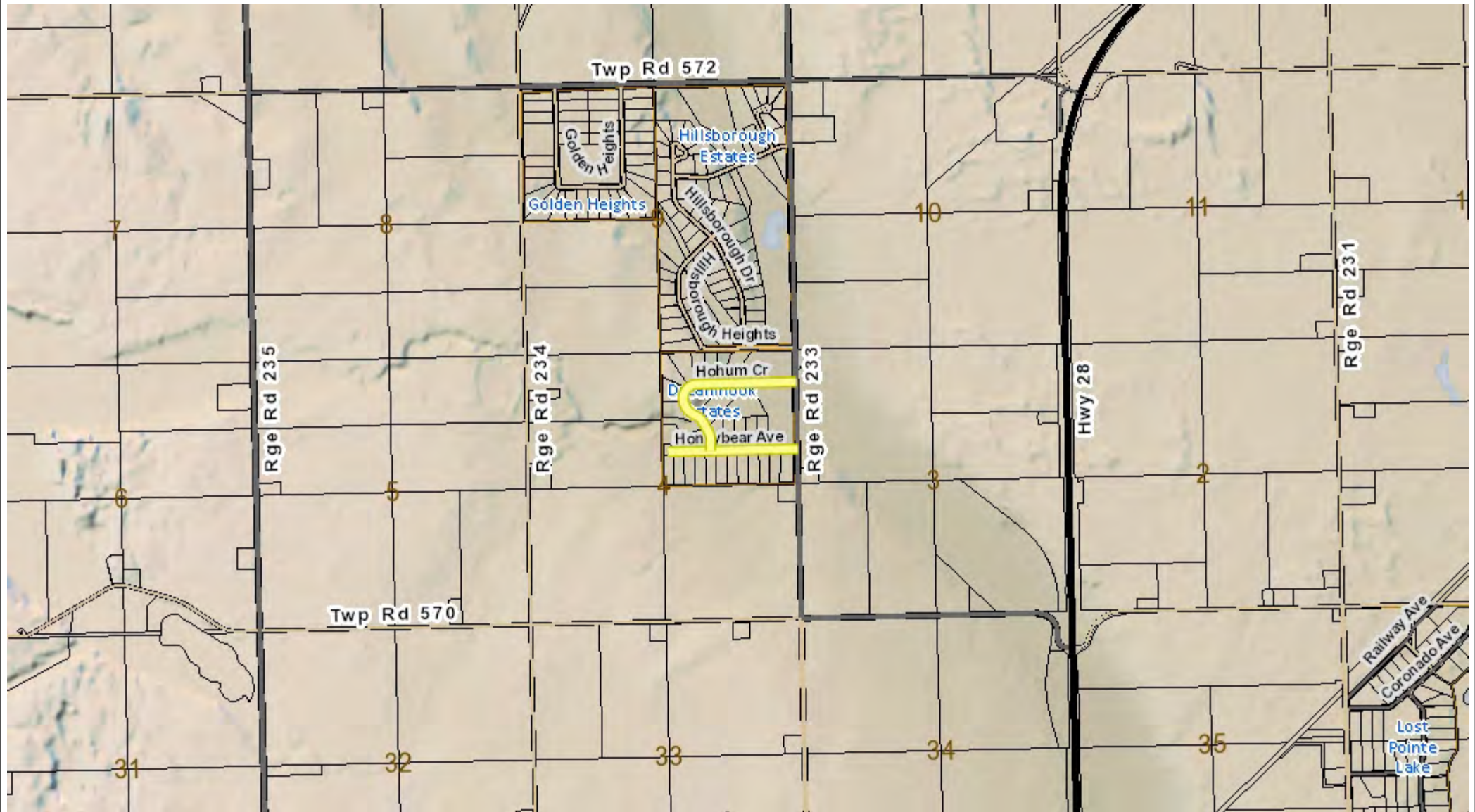
Prepared By: _____



Dreamnook Estates

Hot Pour, Route and Seal

20-Apr-2021



Information on this map is provided solely for the user's information and, while thought to be accurate, is provided strictly "as is" and without warranty of any kind.

NAD_1983_10TM_AEP_Resource
© Sturgeon County

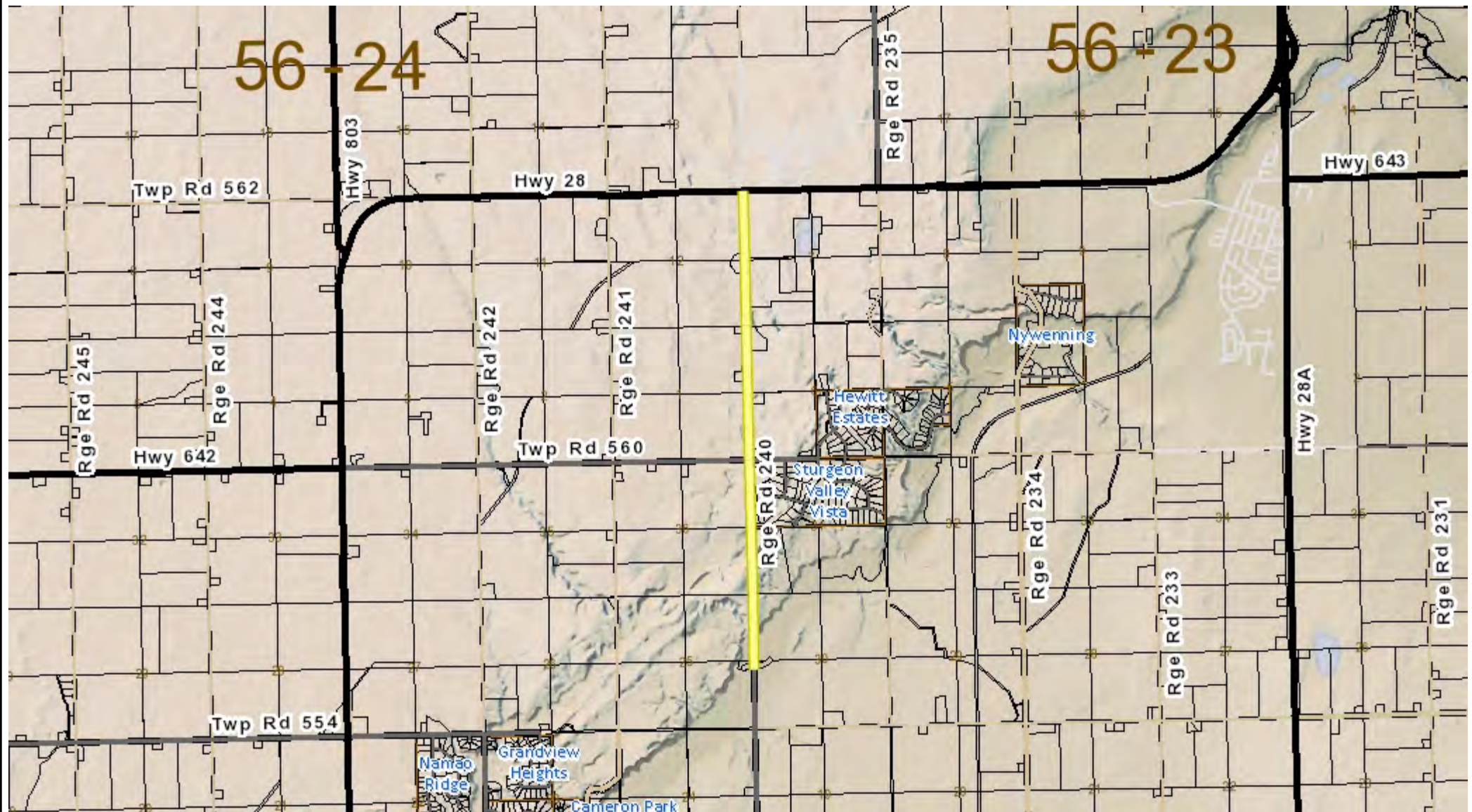
Prepared By: Ty Fergel



Sunnyside Road

Hot Pour, Route and Seal

20-Apr-2021



Information on this map is provided solely for the user's information and, while thought to be accurate, is provided strictly "as is" and without warranty of any kind.

NAD_1983_10TM_AEP_Resource
© Sturgeon County

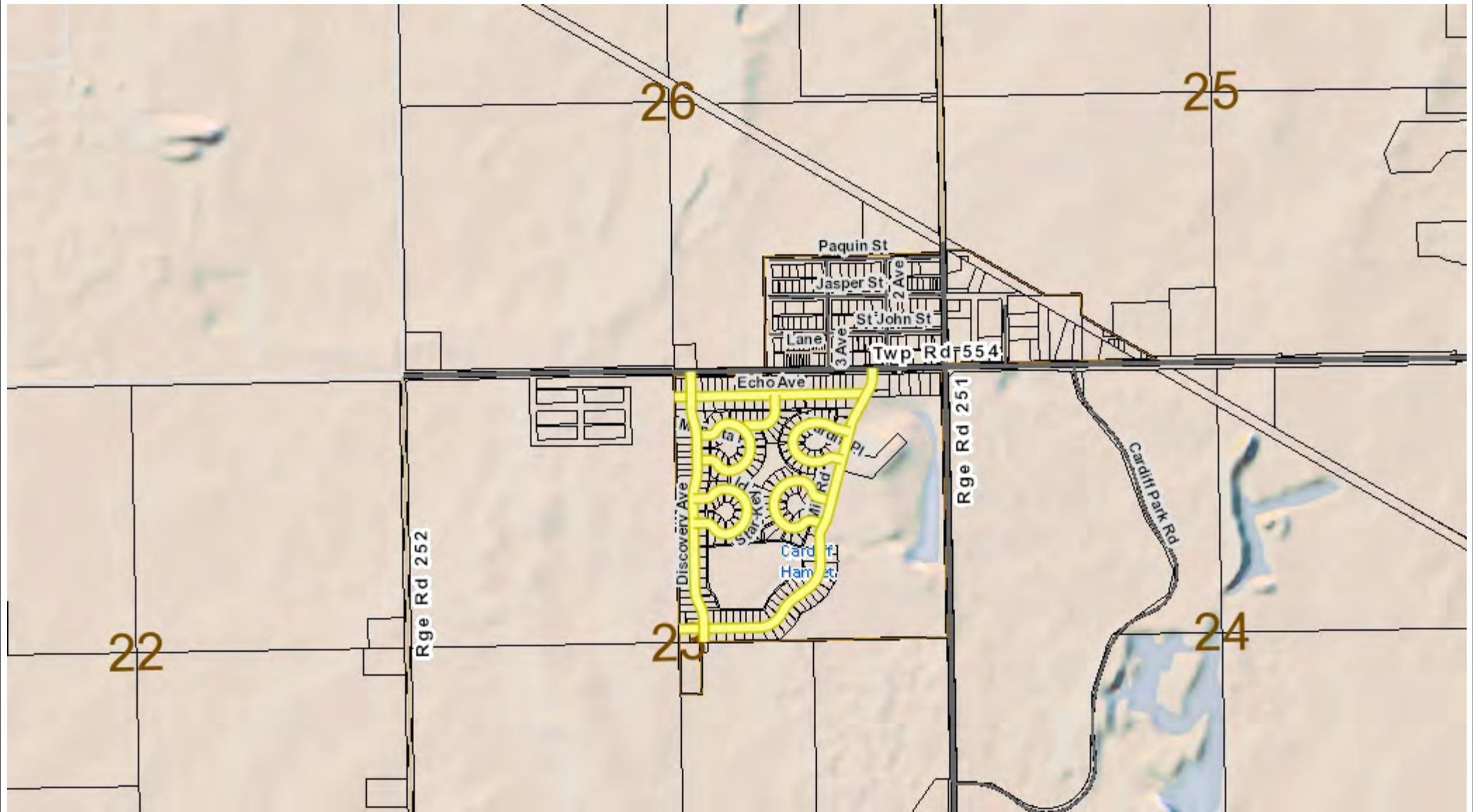
Prepared By: Ty Fergel



Cardiff Echoes

Hot Pour, Route and Seal

20-Apr-2021



Information on this map is provided solely for the user's information and, while thought to be accurate, is provided strictly "as is" and without warranty of any kind.

NAD_1983_10TM_AEP_Resource
© Sturgeon County

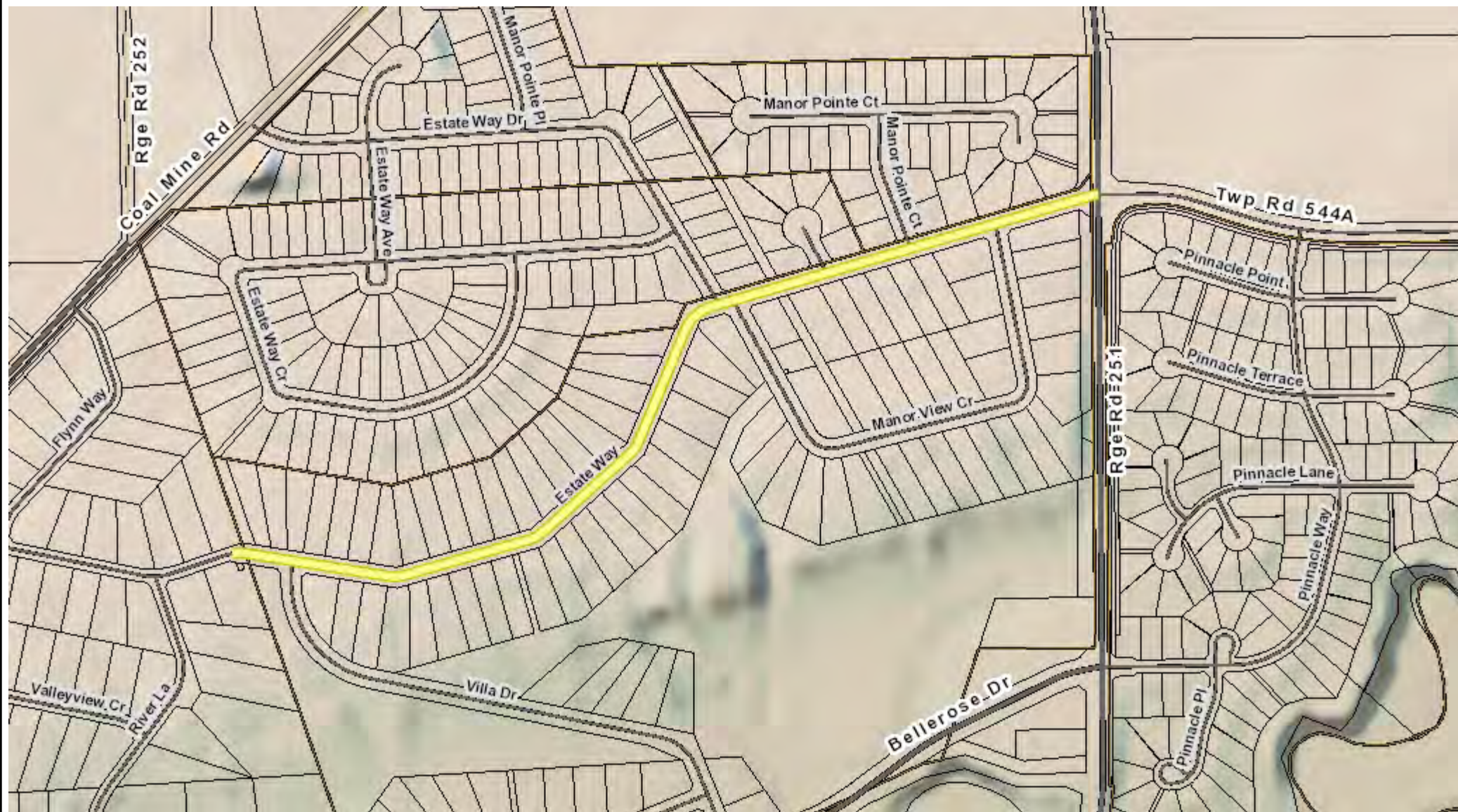
Prepared By: Ty Fergel



Estate Way Drive

Hot Pour, Route and Seal

20-Apr-2021



Information on this map is provided solely for the user's information and, while thought to be accurate, is provided strictly "as is" and without warranty of any kind.

NAD_1983_10TM_AEP_Resource
© Sturgeon County

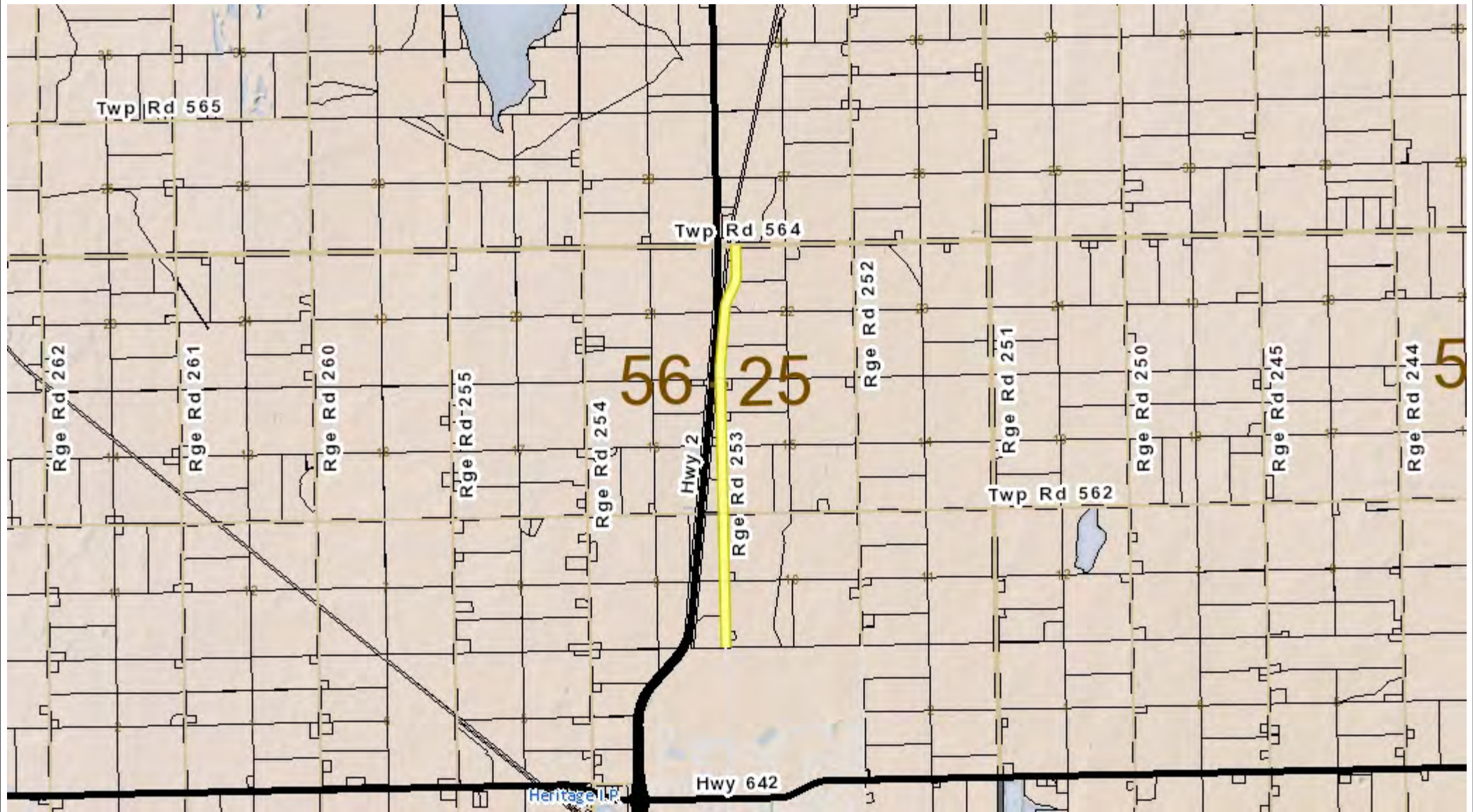
Prepared By: Ty Fergel



Old Highway #2

Hot Pour, Route and Seal

20-Apr-2021



Information on this map is provided solely for the user's information and, while thought to be accurate, is provided strictly "as is" and without warranty of any kind.

NAD_1983_10TM_AEP_Resource
© Sturgeon County

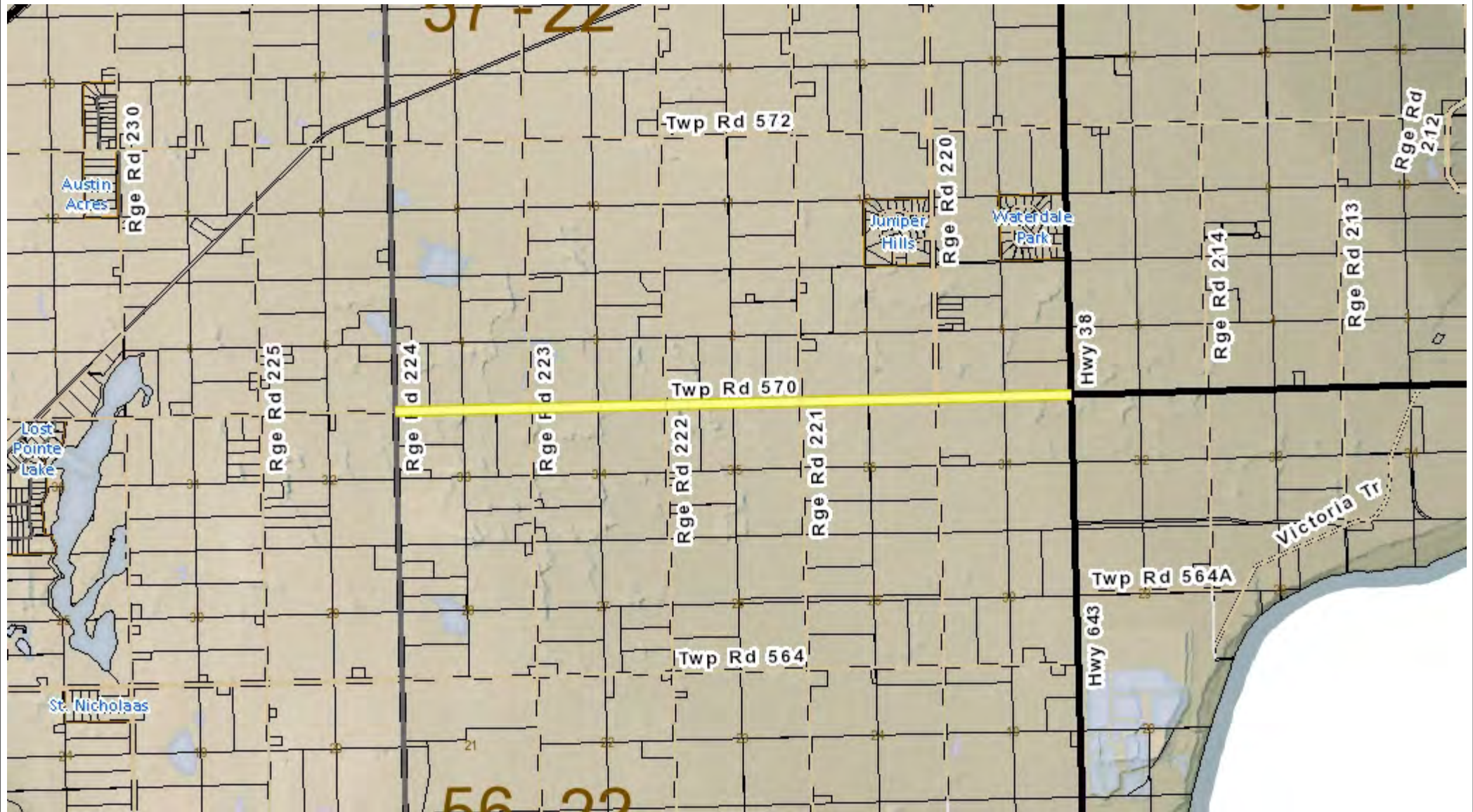
Prepared By: Ty Fergel



Heartland Drive

Hot Pour, Route and Seal

20-Apr-2021



Information on this map is provided solely for the user's information and, while thought to be accurate, is provided strictly "as is" and without warranty of any kind.

NAD_1983_10TM_AEP_Resource
© Sturgeon County

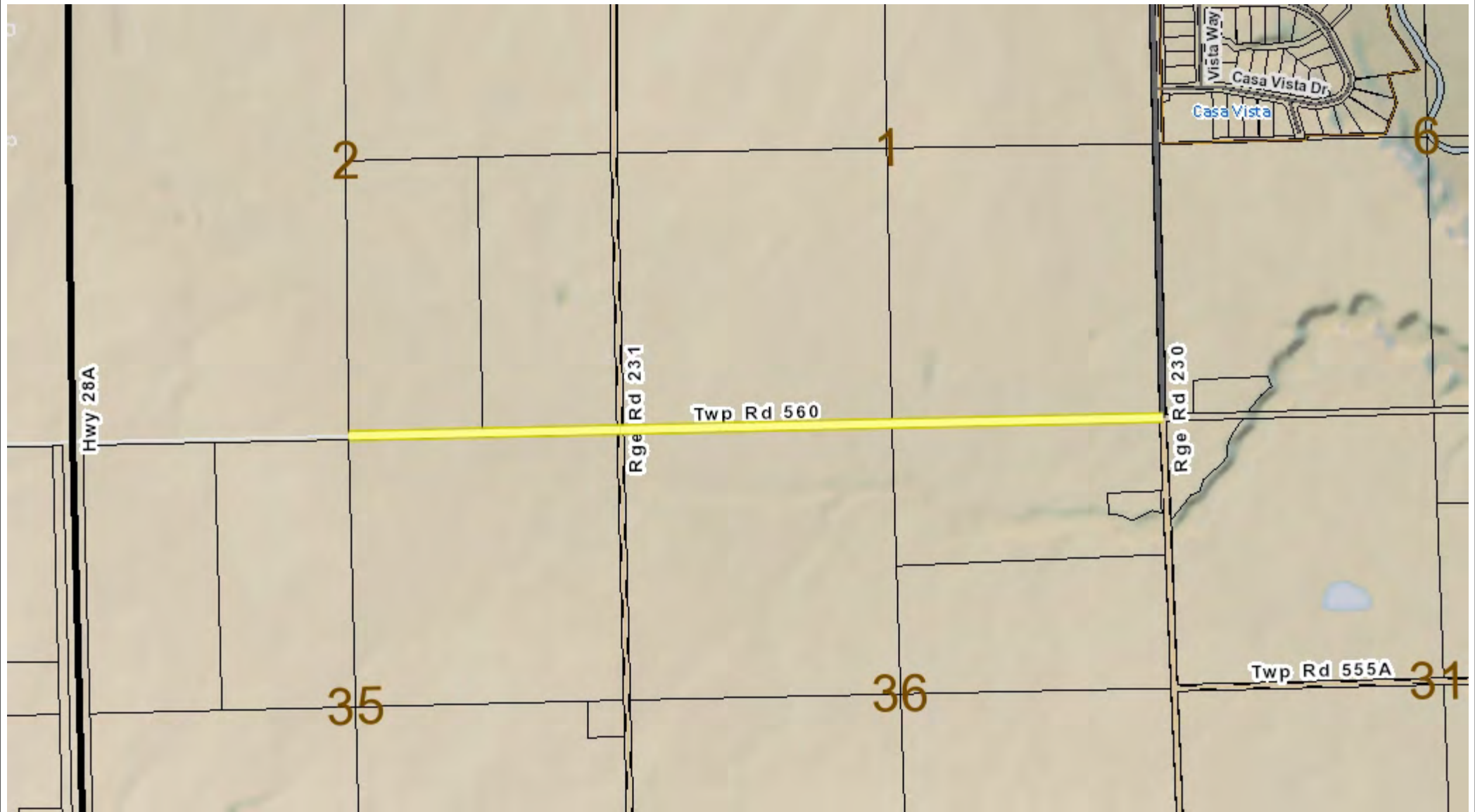
Prepared By: Ty Fergel



Vista Road - Township Road 560

Pavement Preservation

20-Apr-2021



Information on this map is provided solely for the user's information and, while thought to be accurate, is provided strictly "as is" and without warranty of any kind.

NAD_1983_10TM_AEP_Resource
© Sturgeon County

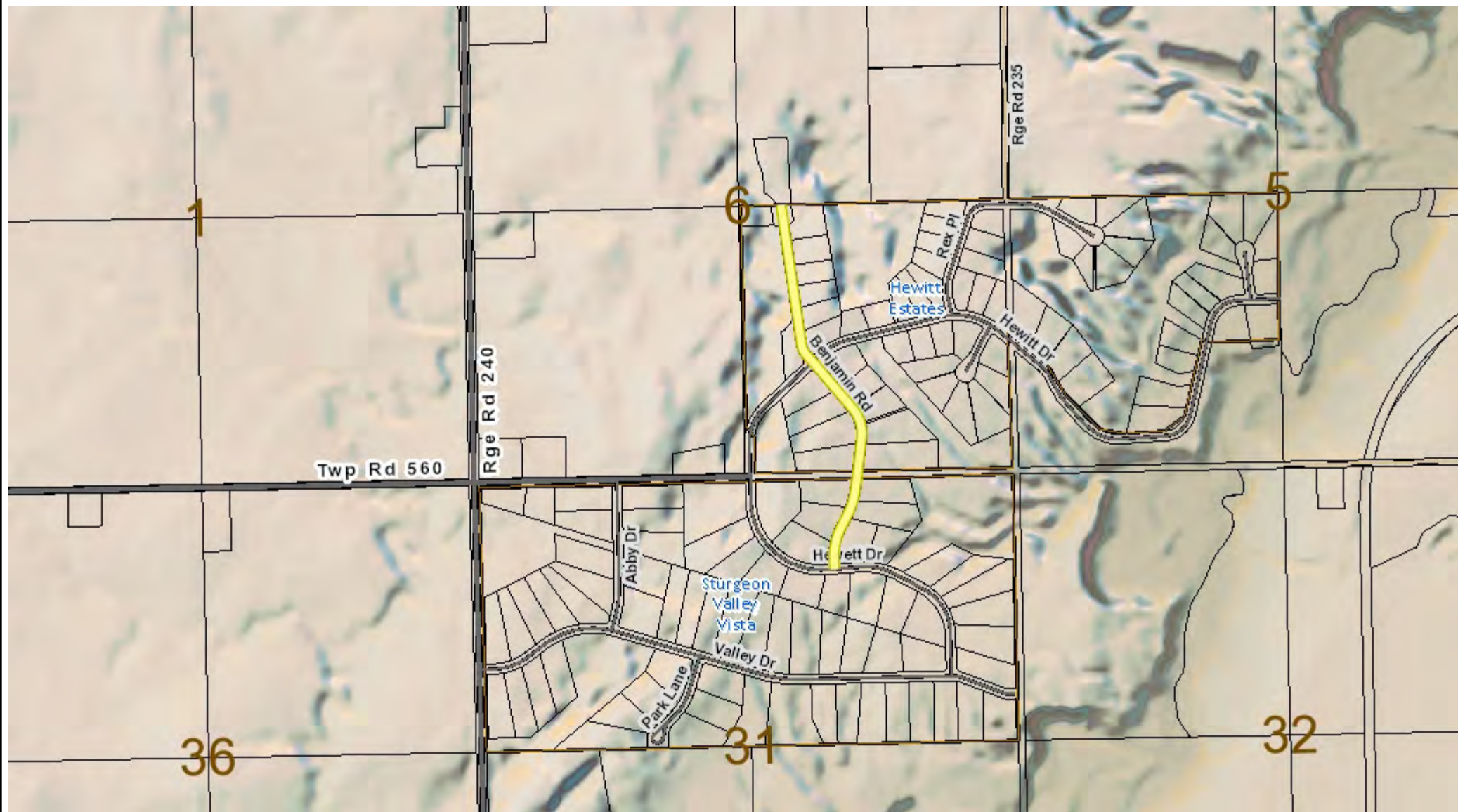
Prepared By: Ty Fergel



Benjamin Road

Pavement Preservation

20-Apr-2021



Information on this map is provided solely for the user's information and, while thought to be accurate, is provided strictly "as is" and without warranty of any kind.

NAD_1983_10TM_AEP_Resource
© Sturgeon County

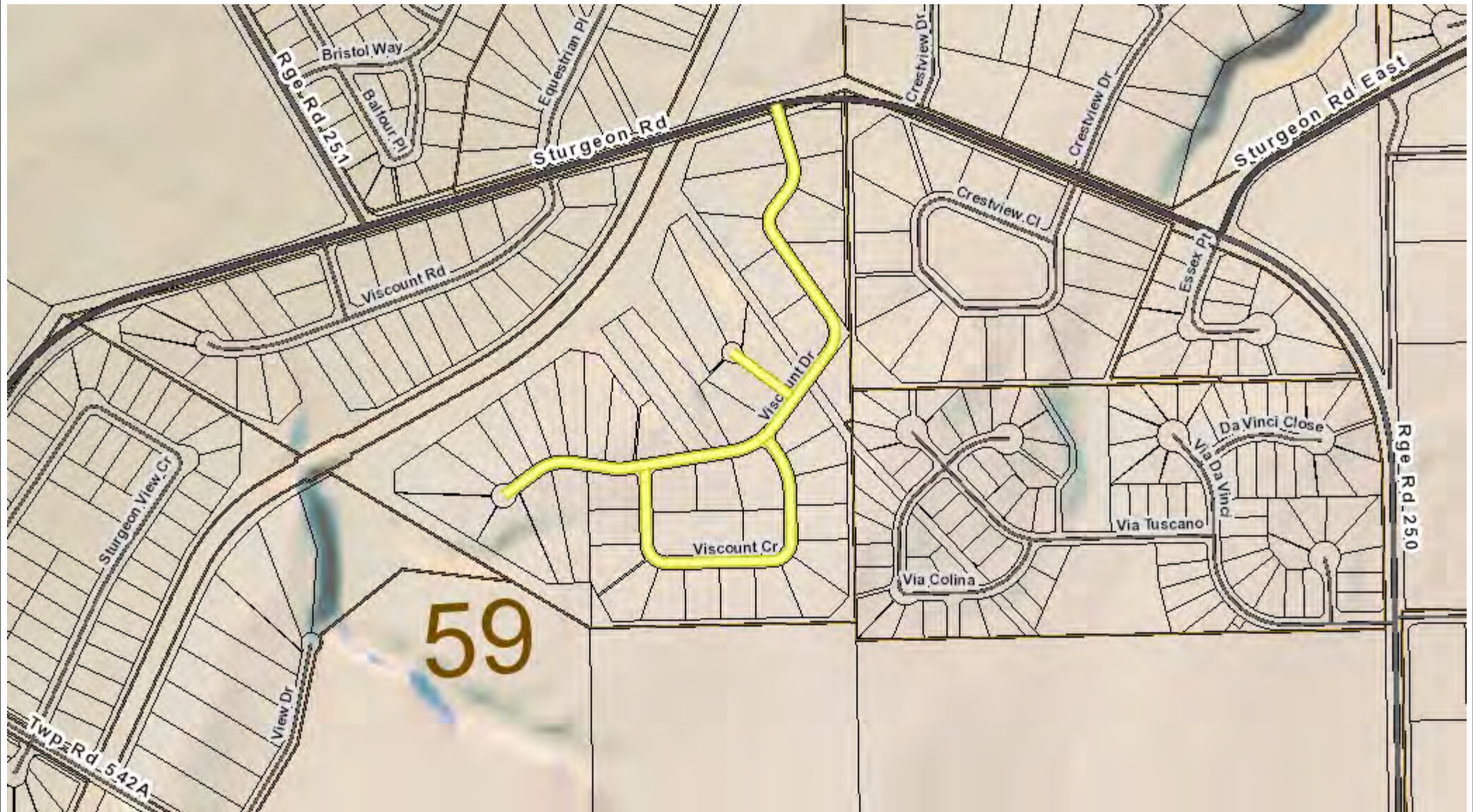
Prepared By: Ty Fergel



Upper Viscount

Pavement Preservation

20-Apr-2021



Information on this map is provided solely for the user's information and, while thought to be accurate, is provided strictly "as is" and without warranty of any kind.

NAD_1983_10TM_AEP_Resource
© Sturgeon County

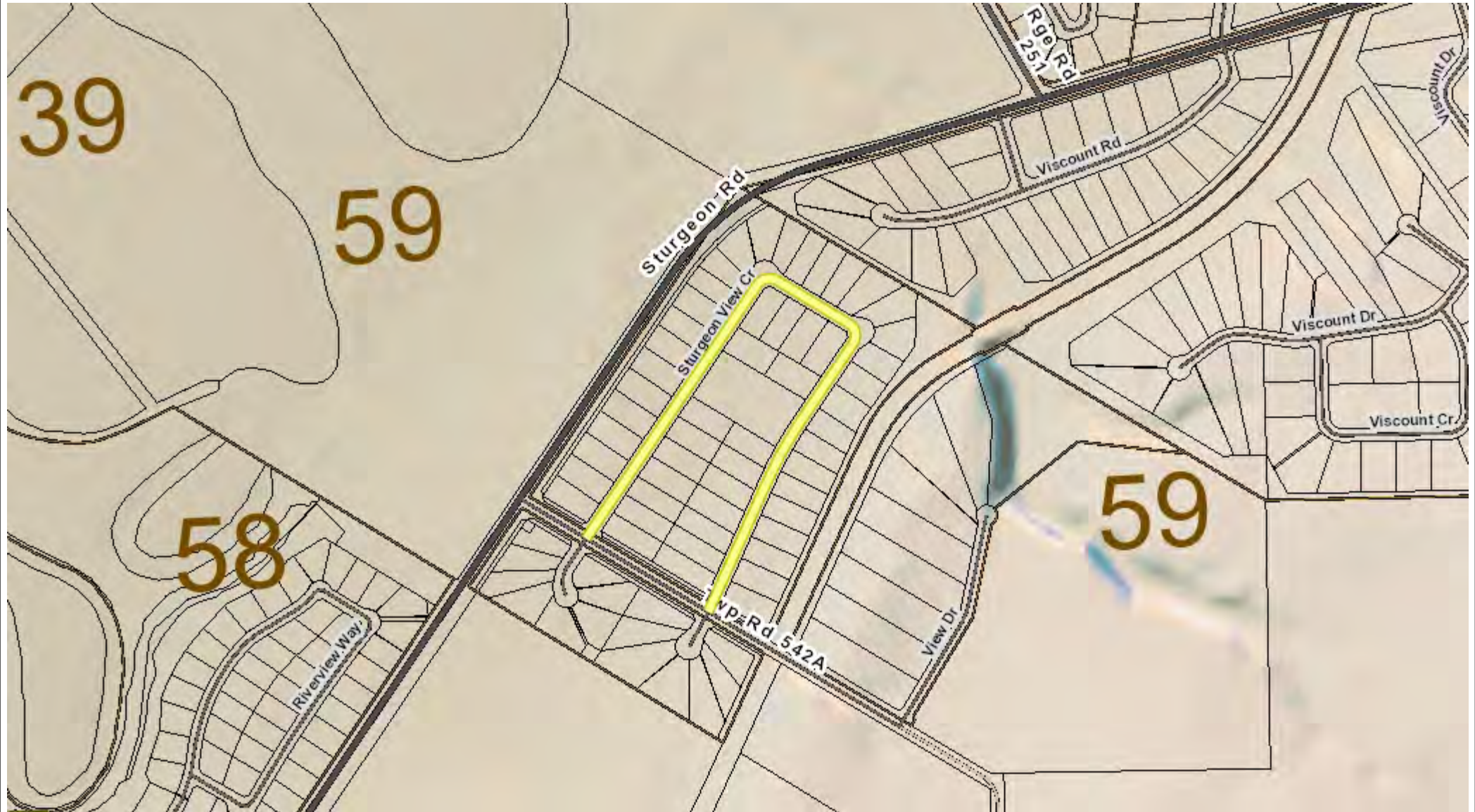
Prepared By: Ty Fergel



Manor Estates II

Pavement Preservation

20-Apr-2021



Information on this map is provided solely for the user's information and, while thought to be accurate, is provided strictly "as is" and without warranty of any kind.

NAD_1983_10TM_AEP_Resource
© Sturgeon County

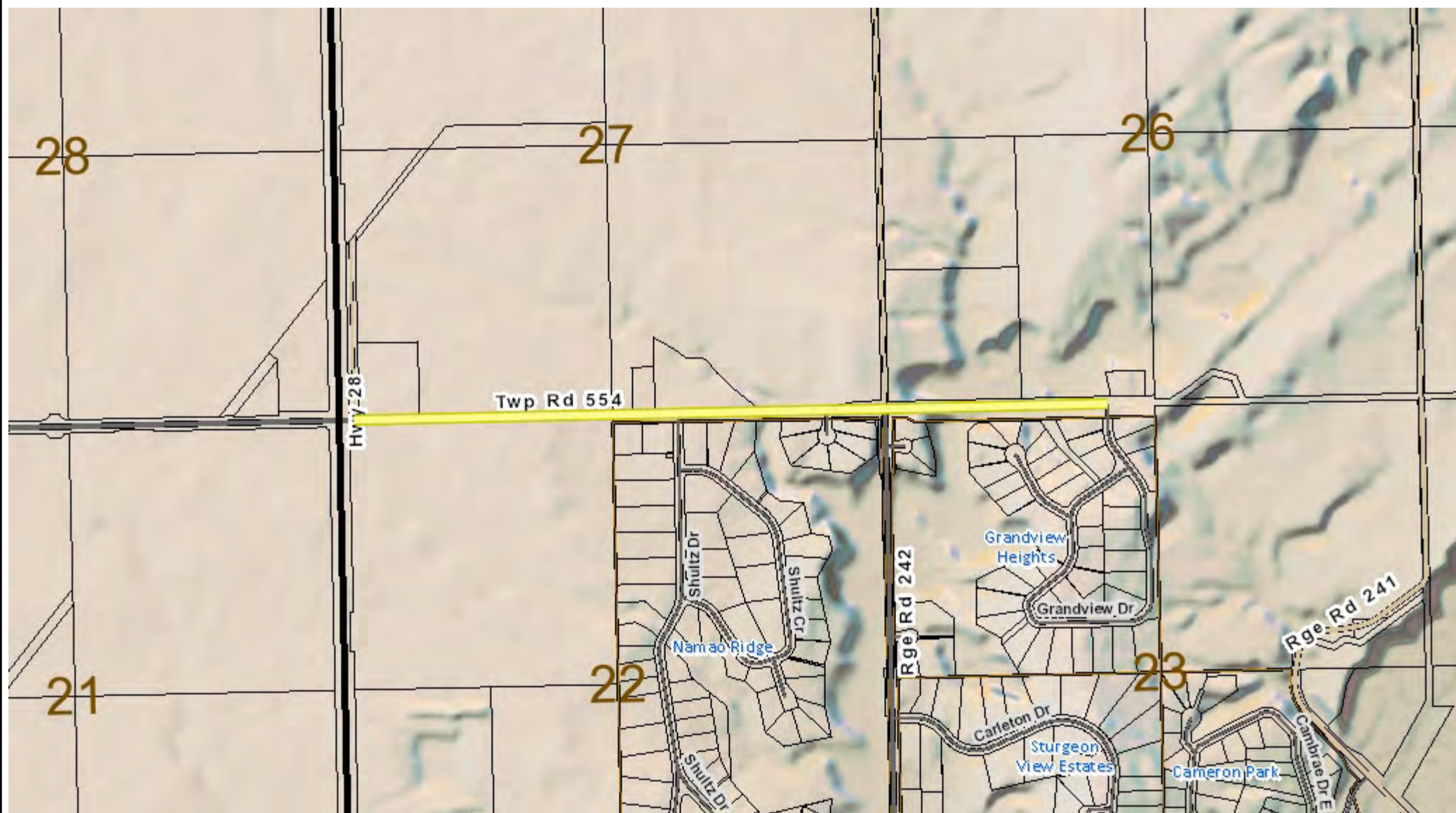
Prepared By: Ty Fergel



Township Road 554

Pavement Preservation

20-Apr-2021



Information on this map is provided solely for the user's information and, while thought to be accurate, is provided strictly "as is" and without warranty of any kind.

NAD_1983_10TM_AEP_Resource
© Sturgeon County

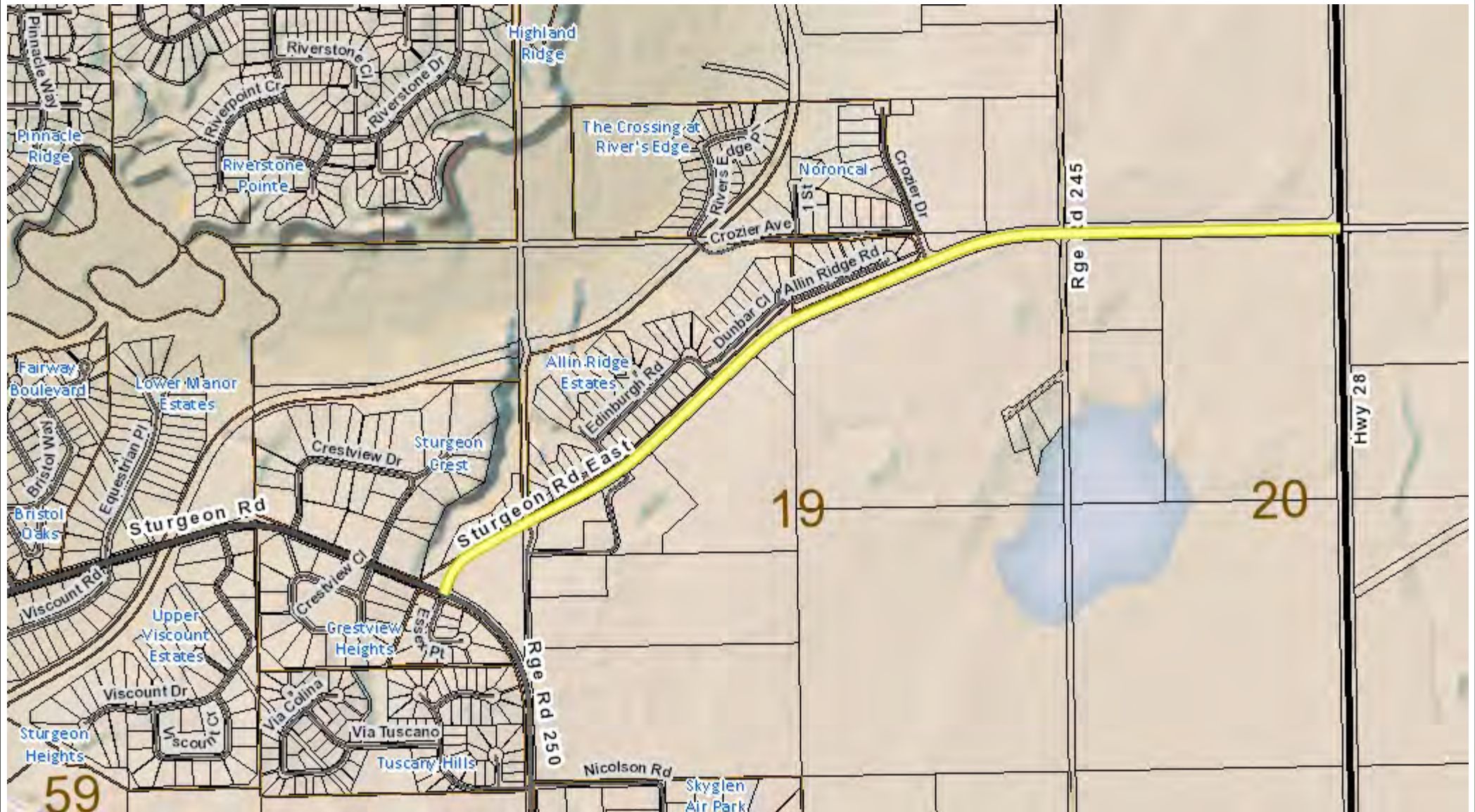
Prepared By: Ty Fergel



Sturgeon Road East

Pavement Preservation

20-Apr-2021



Information on this map is provided solely for the user's information and, while thought to be accurate, is provided strictly "as is" and without warranty of any kind.

NAD_1983_10TM_AEP_Resource
© Sturgeon County

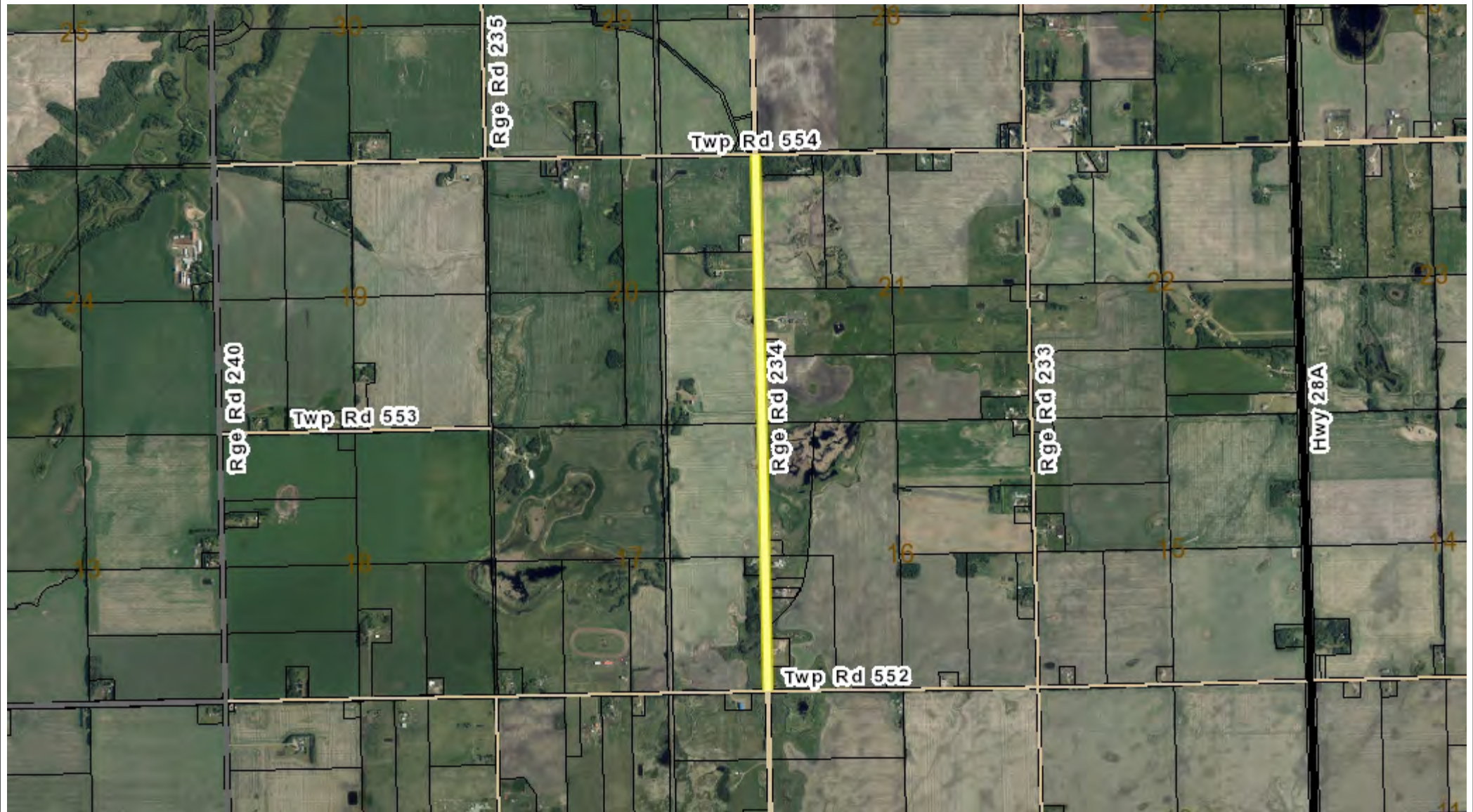
Prepared By: Ty Fergel



Additional Projects

Gravel Road Stabilization

23-Apr-2021



Information on this map is provided solely for the user's information and, while thought to be accurate, is provided strictly "as is" and without warranty of any kind.

NAD_1983_10TM_AEP_Resource
© Sturgeon County

Prepared By: Ty Fergel

