

# **Meadowview Drive**

## **Functional Planning Study**

### **Highway 44 to City of St Albert**

Presentation to Sturgeon County Council

May 23, 2017

# Outline of Presentation

- **The following is the original presentation from May 28, 2013:**
- Study Objectives & Process
- Existing Constraints
- Traffic Projections and Proposed Cross-section
- Realignment Alternatives
- Open House Summary
- Recommended Plan
- Opinion of Probable Costs
- Options

# Study Objectives

- Identify the future role Meadowview Drive will serve in the area
- Develop access management options
- Address environmental and drainage issues
- Resolve utility conflicts
- Identify right-of-way requirements

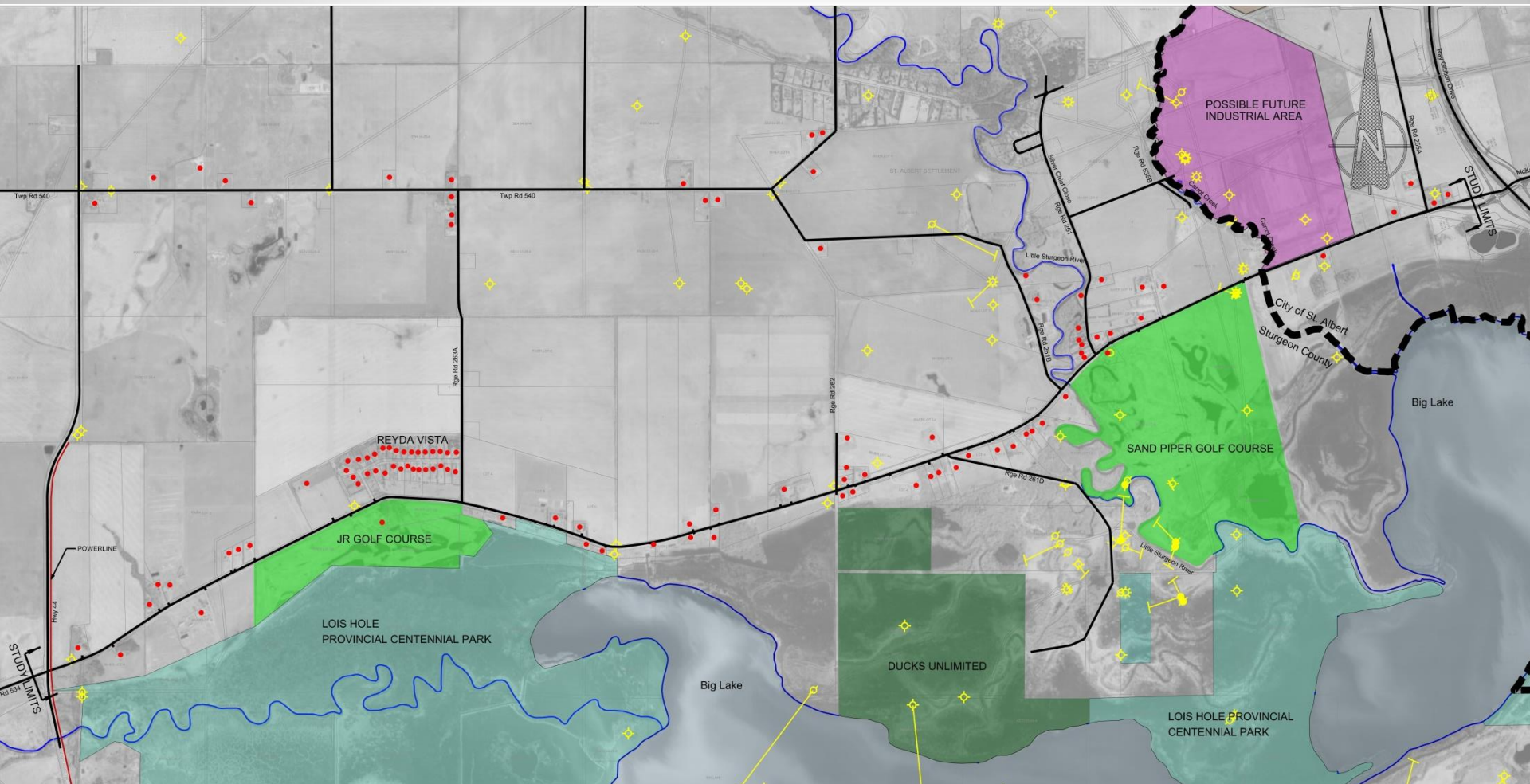
# Study Process

1. Collect background information
2. Develop Alternatives
3. Identify a Preferred Alternative
4. Open House #1 held June 28, 2012
5. Presentation to County Council
6. Open House #2 held on February 12, 2013
7. Present to County Council
8. Finalize Recommended Plan
9. **Plan Approval by Sturgeon County**

 We are here



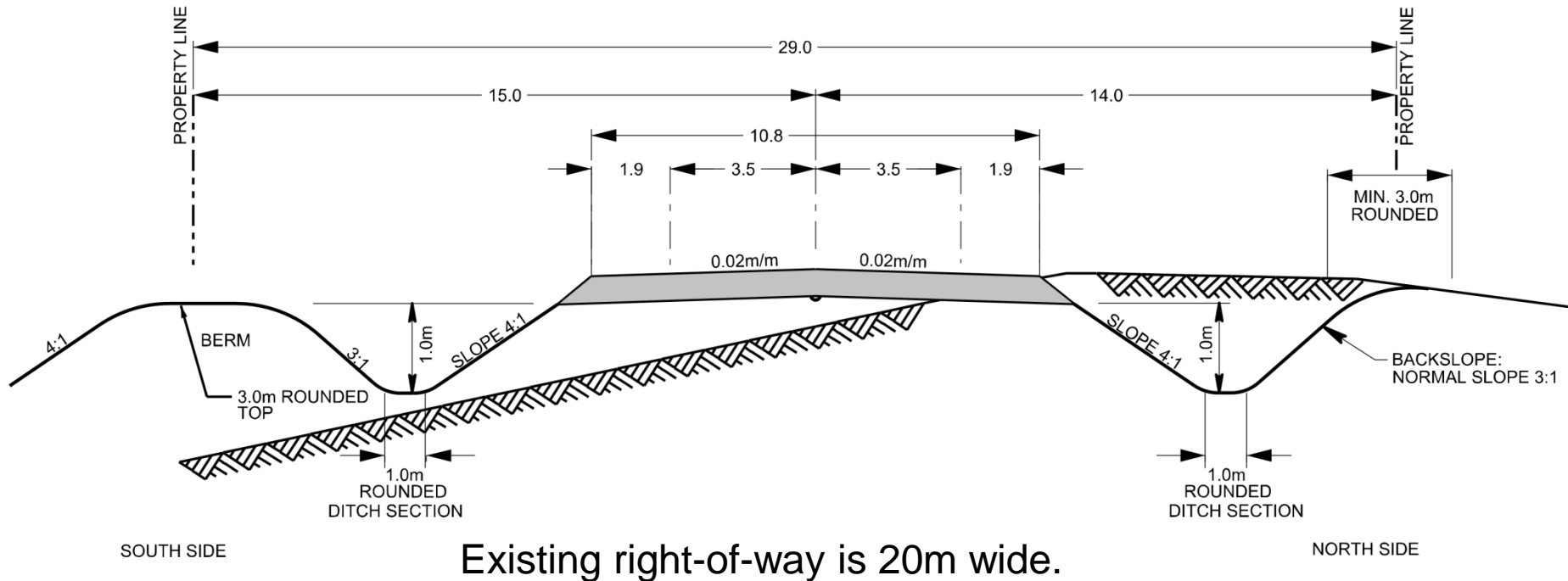
# Constraints



# Traffic

- Existing traffic volumes on Meadowview Drive:
  - 1,370 vehicles/day east of Highway 44
  - 2,480 vehicles/day west of Ray Gibbon Drive
- Traffic has increased on average 6.3%/year over the last 5 years and 15.9% over the last 9 years
- 2032 volumes are anticipated to be:
  - 3,100 vehicles/day east of Highway 44
  - 5,600 vehicles/day west of Ray Gibbon Drive

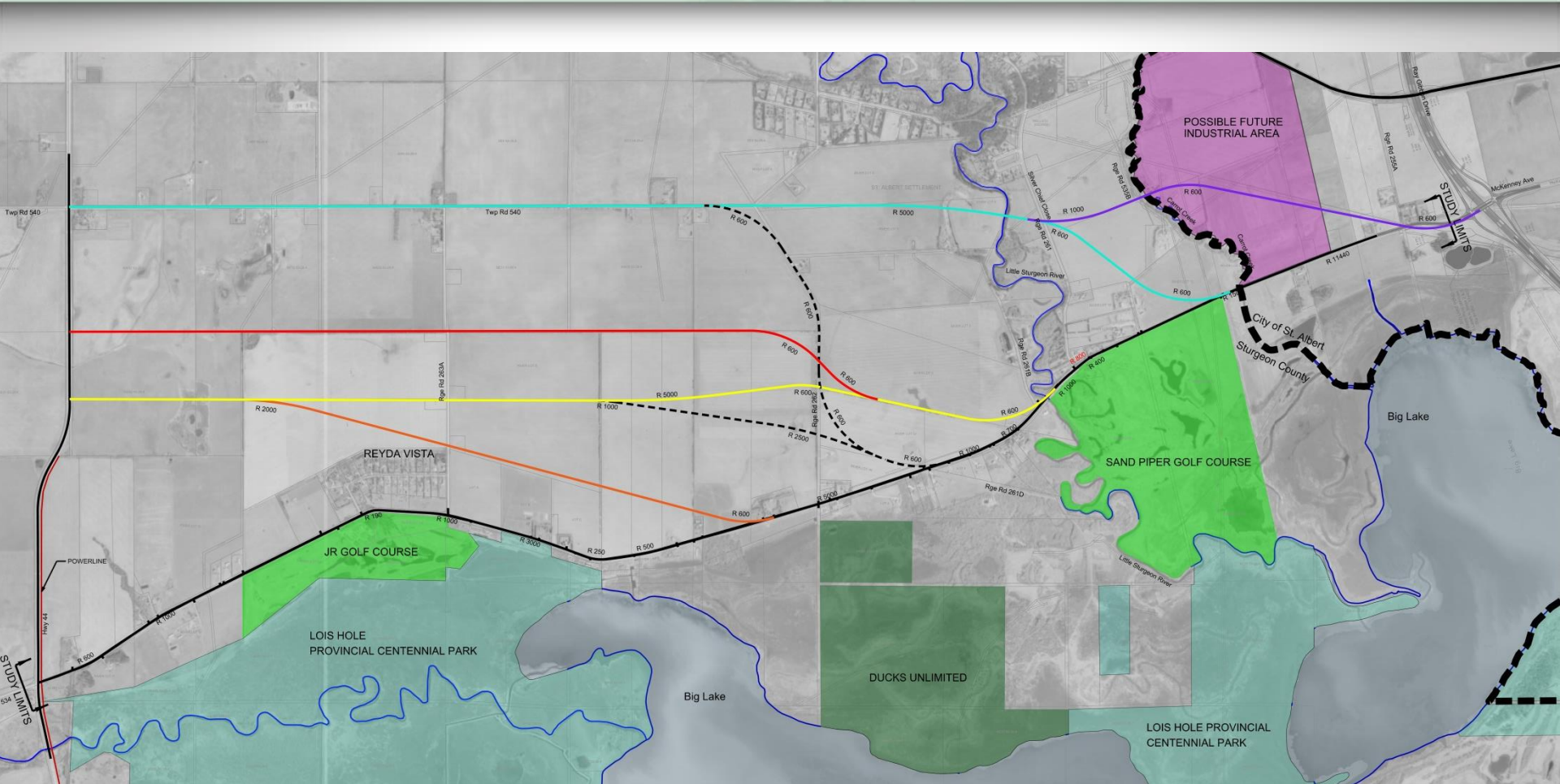
# Proposed Cross-Section



Widening will occur to the north from Hwy 44 to the Sturgeon River. East of the river, widening will occur to the south.



# Realignment Option



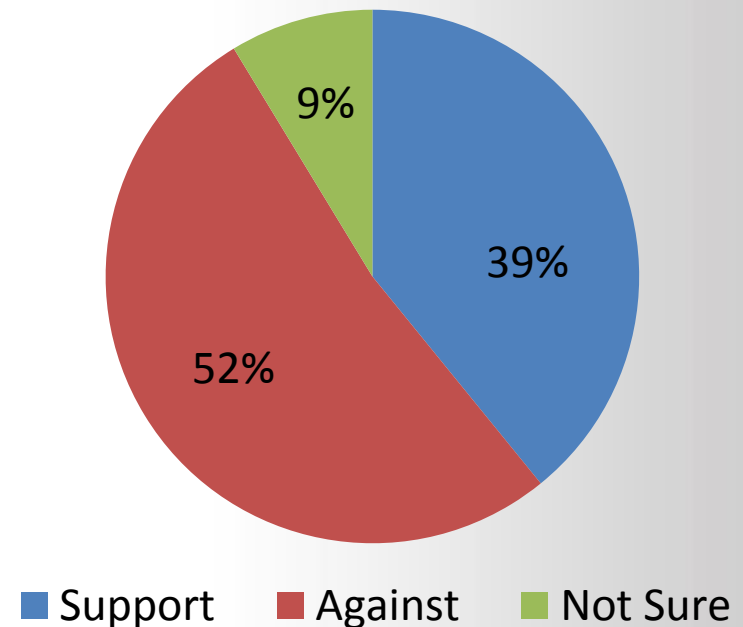


# Open House #1 – June 28

## Main concerns:

- Road conditions
- Short-cutting
- Speeding & User Safety
- Right-of-way requirements and proximity impacts
- Capital expenditures

**Public Support for Realignment**

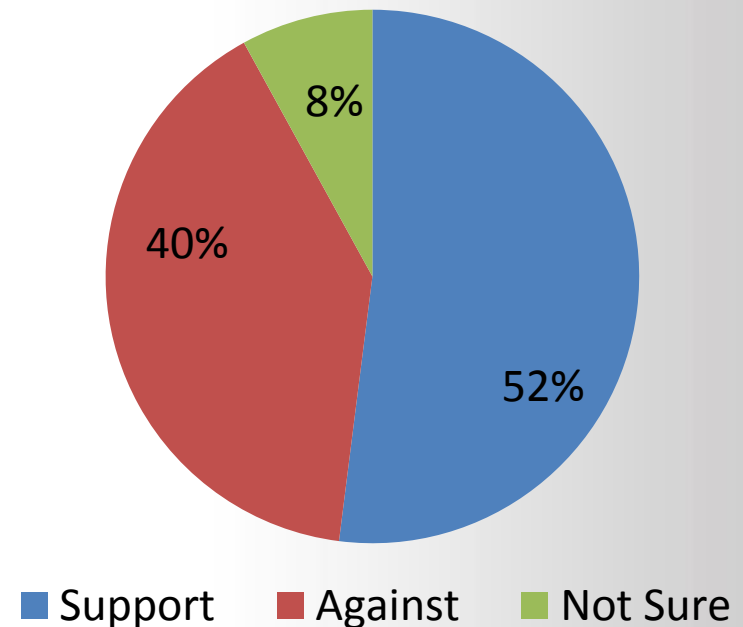


# Open House #2 – Feb. 12

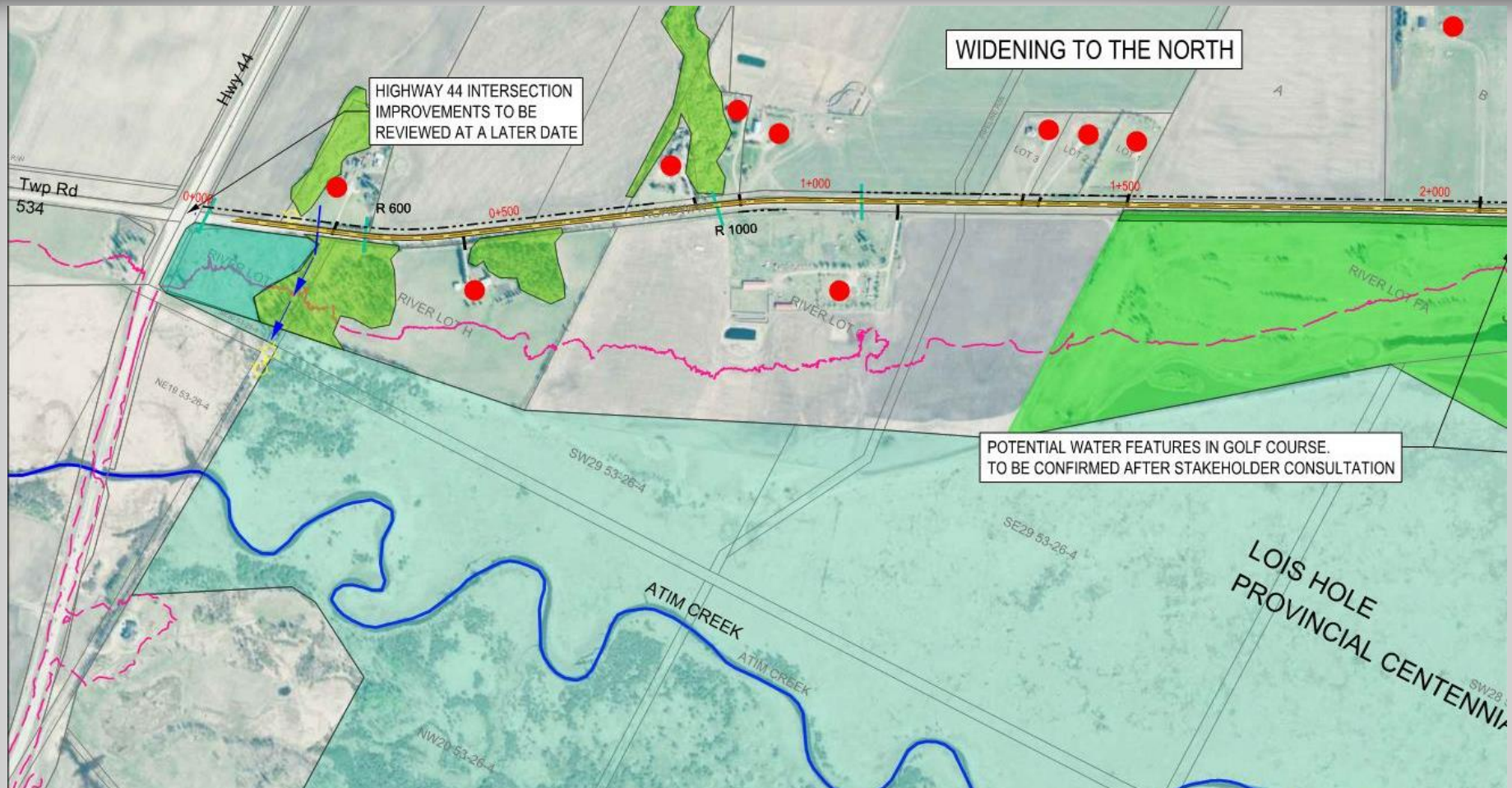
## Main concerns:

- Road conditions
- Short-cutting
- Speeding & User Safety
- Right-of-way requirements  
& proximity impacts
- Capital expenditures
- Timing of Repairs

**Public Support for  
Recommended Plan**

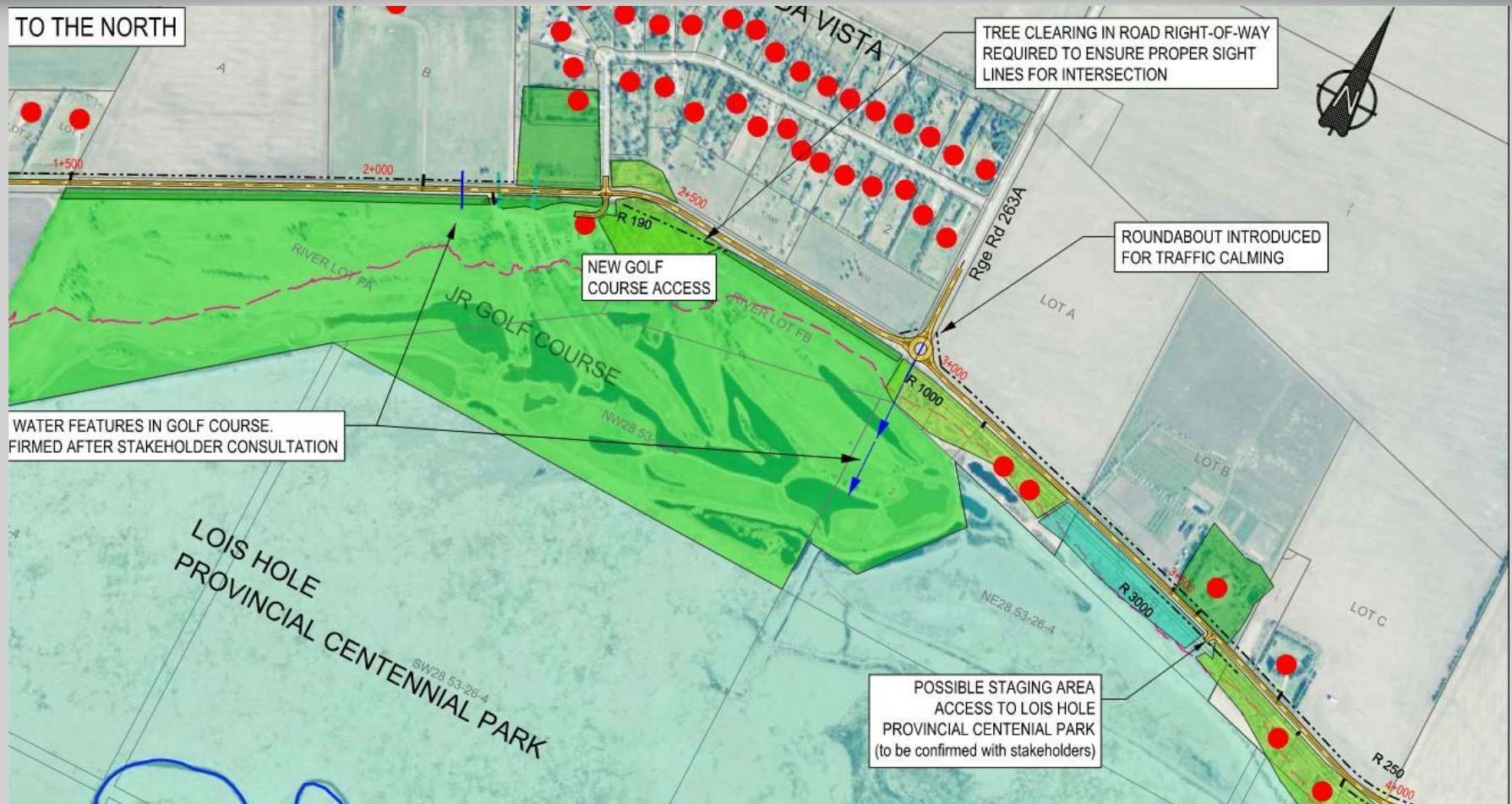


# Recommended Option



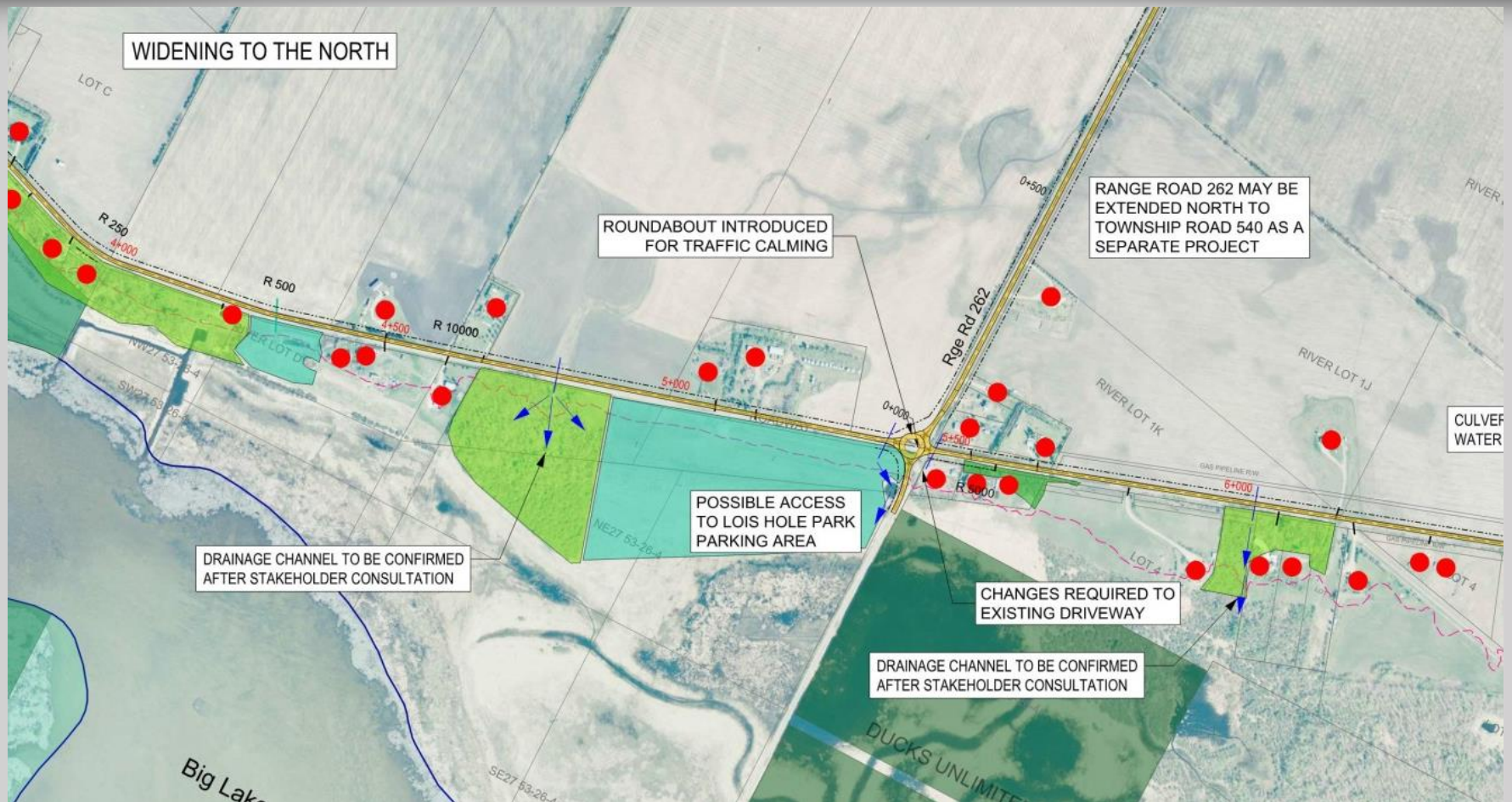


# Recommended Option



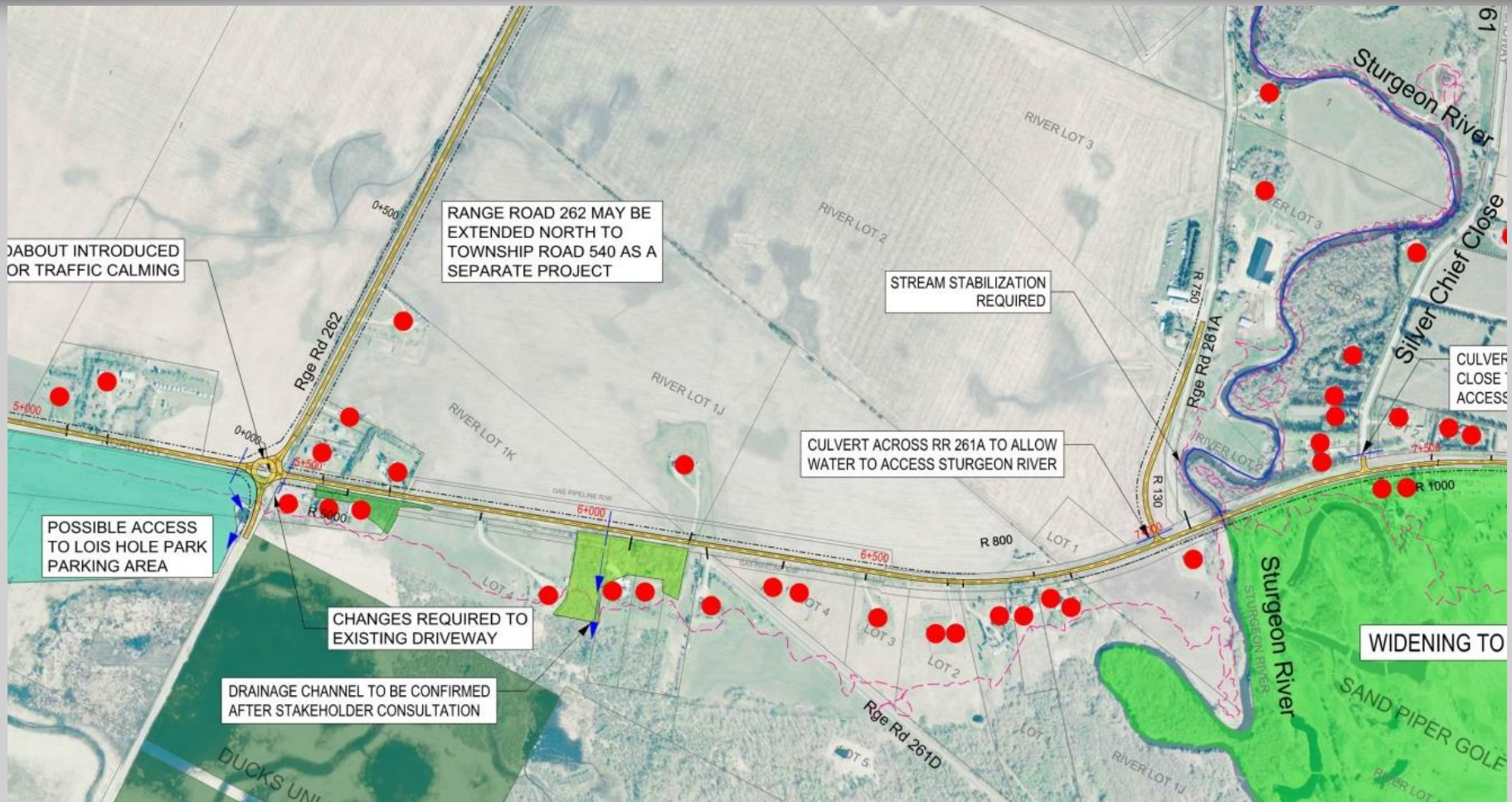


## Recommended Option



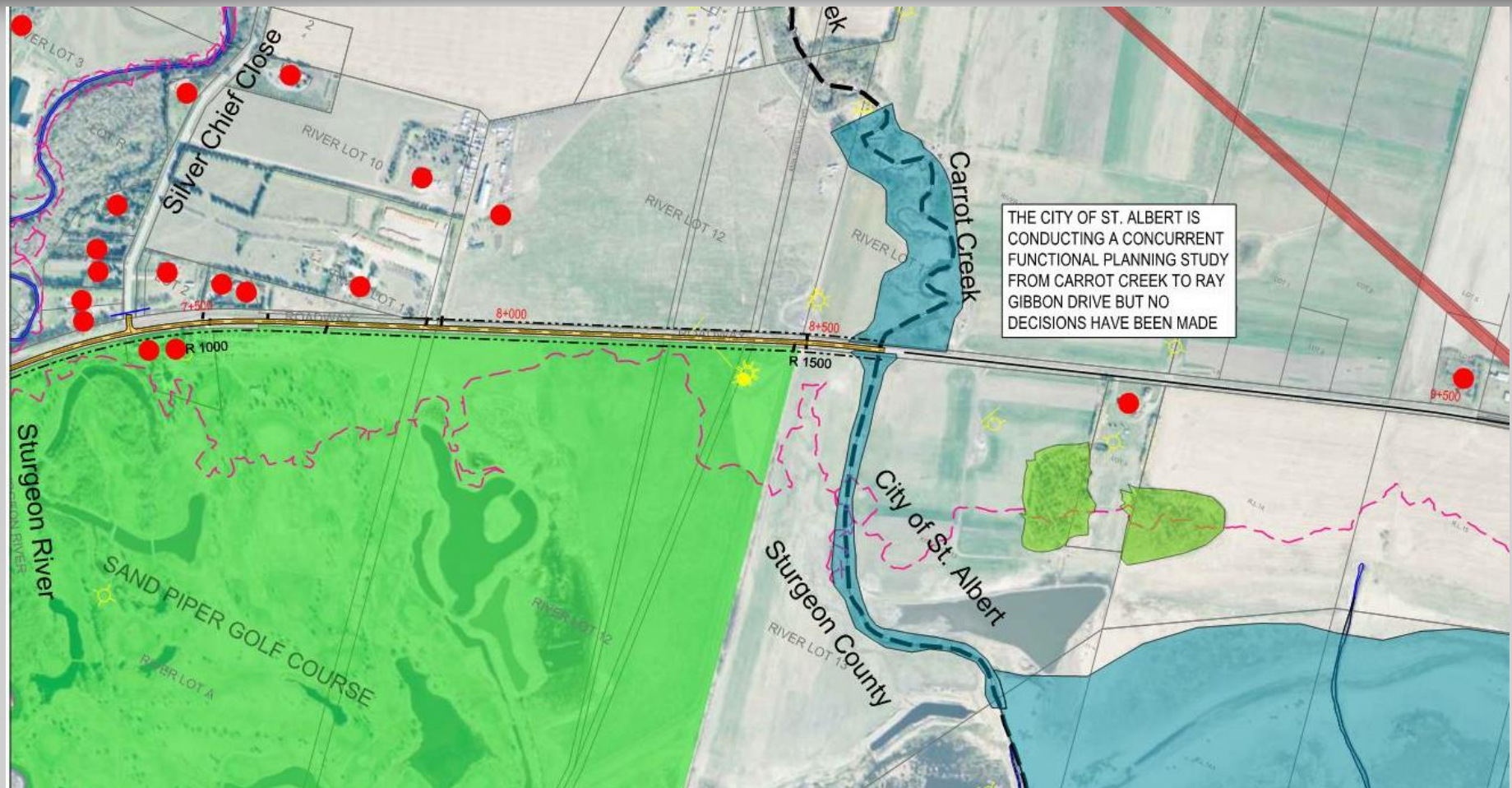


## Recommended Option

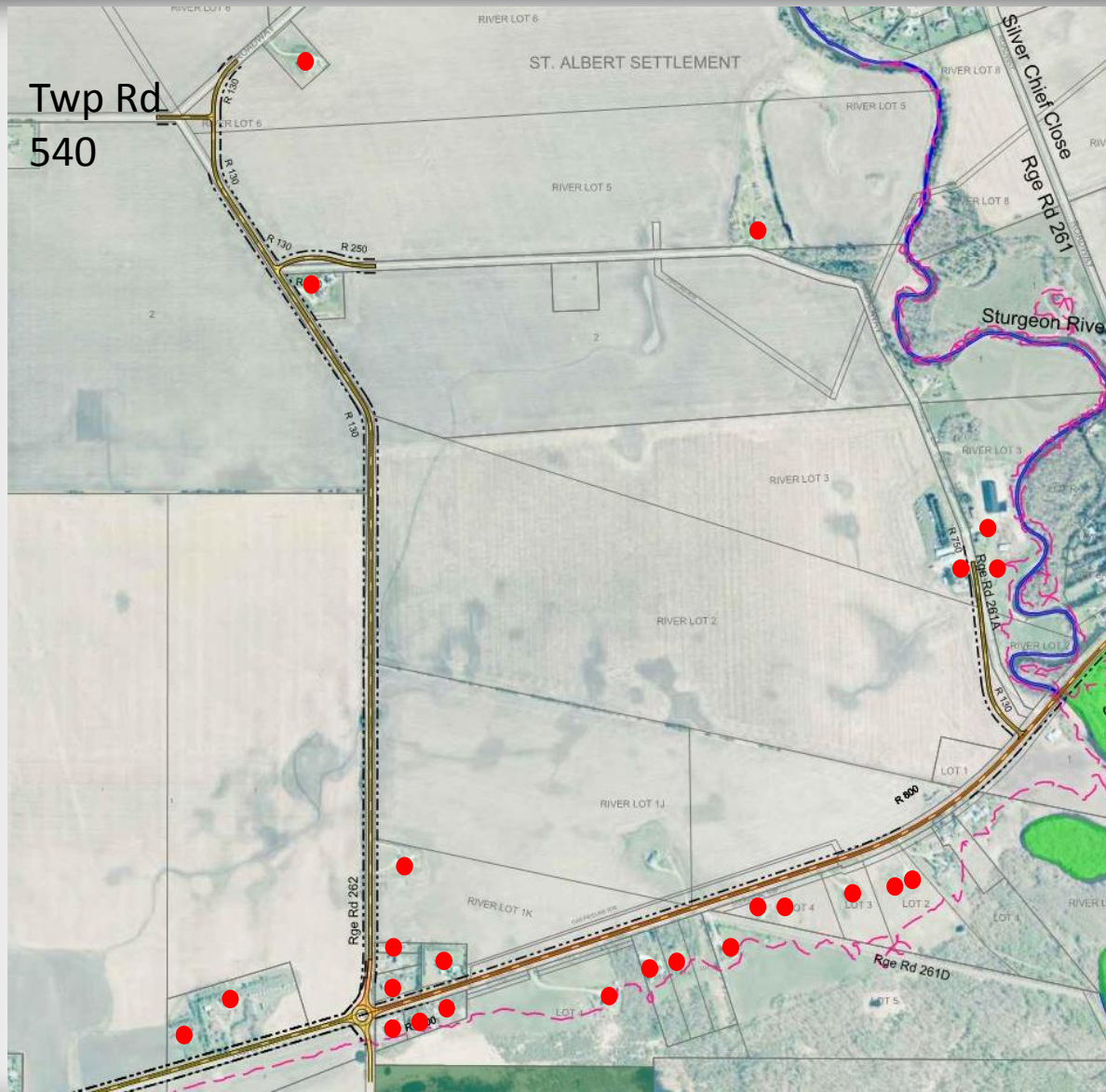




## Recommended Option



# Recommended Option





# Opinion of Probable Costs

Road Segment	Cost (2013\$)
Realignment of RR261A & Sturgeon River Bank Stabilization	\$1.8M
Meadowview Dr. – Carrot Creek to Silver Chief Close	\$2.3M
Meadowview Dr. – Silver Chief Close to RR261A	\$0.7M
Meadowview Dr. – RR261A to RR263	\$9.5M
Meadowview Dr. – RR263 to Highway 44	\$5.9M
Extension of RR262	\$4.1M

Total Cost: \$24.3M



# Moving Forward

- This concludes the original May 28, 2013 presentation to Council
- Moving forward there are 2 options.

# Option 1

- Council accept the recommendations of study  
– including the recommended road alignment
- Council commit to funding of whole project  
(\$24.3 Million with inflation)
- Approve funding of \$1,000,000 for preliminary design to start in 2018

# Option 2

- Conduct a new study for new alignment including bridge replacement east of RR 261A and realignment of RR 261A.
- Council to approve funding approx. \$250,000 for new functional planning study to start in 2018



# Next Steps

- Council direction – Option 1 or Option 2
- Request for Decision

# Questions

