

Sturgeon County – Resident Survey Results

Sustainable Roads Improvement Strategy (SRIS)

Prepared by:

Gordon Molnar, M.A.Sc., P.Eng.

President, Pillar Systems Inc.

Pillar
SYSTEMS

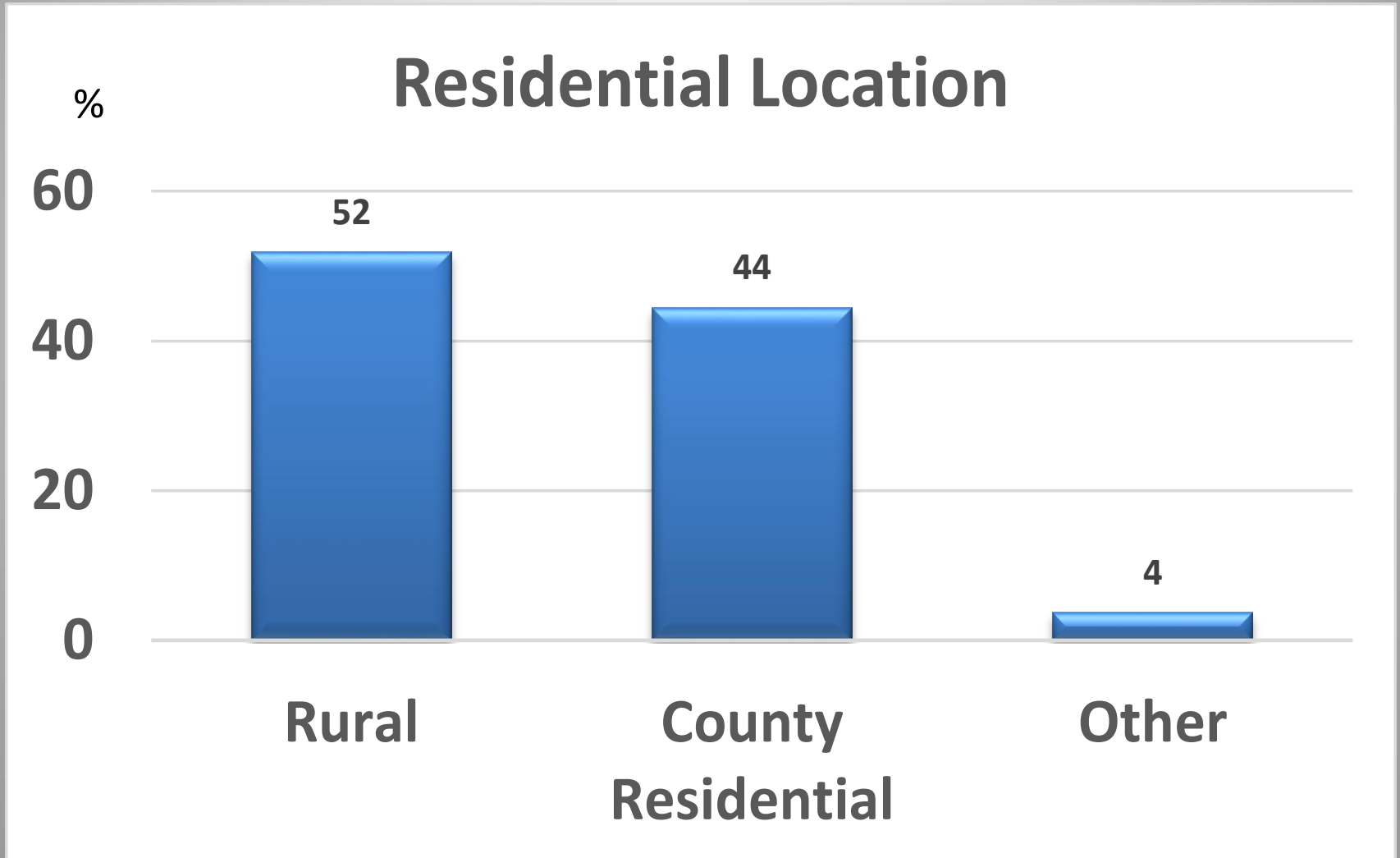
Background

Introduction

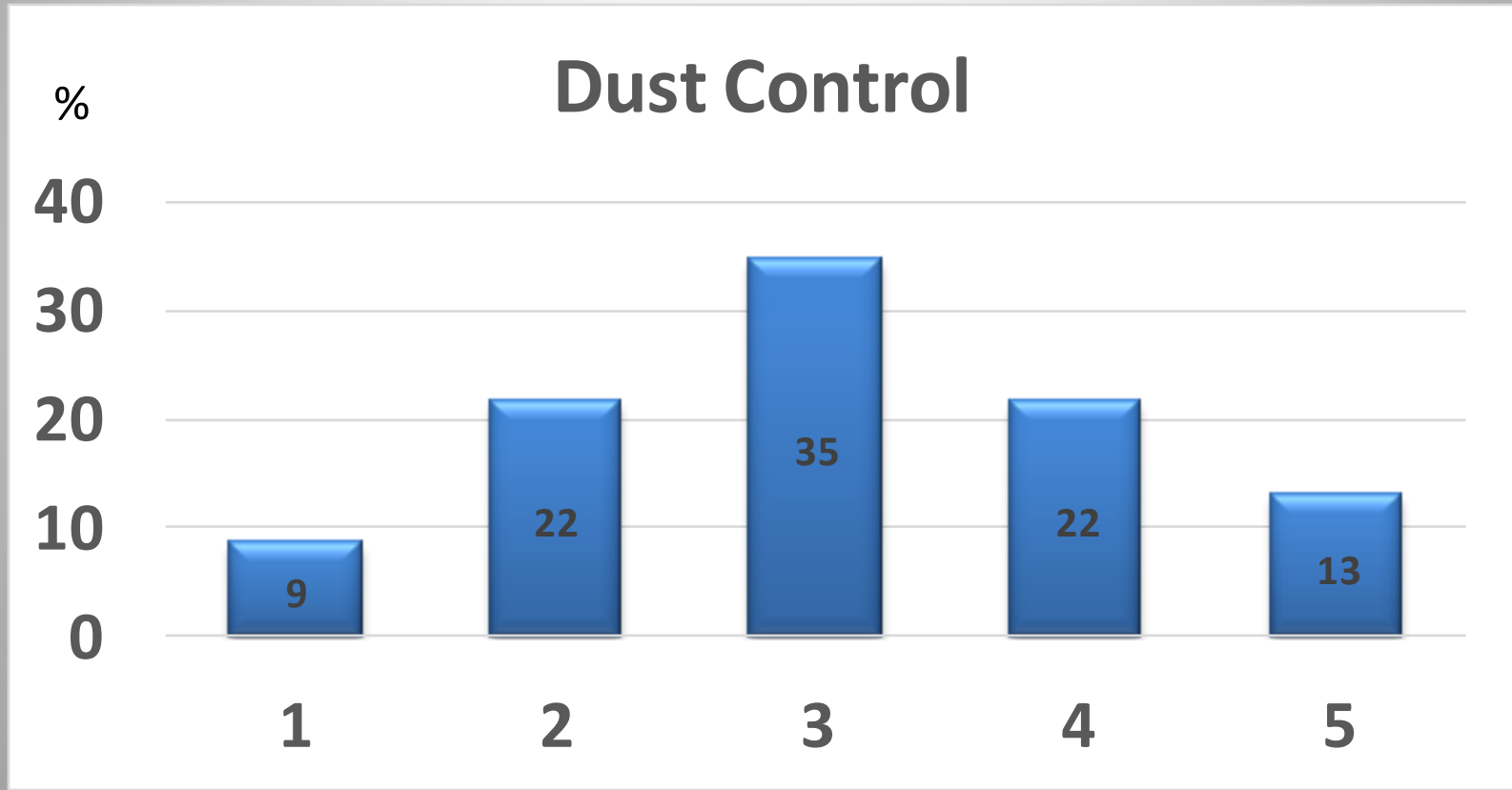
- Survey questionnaire was processed and submitted by the County to all County residents.
- Was done concurrent with two Public Open House Meetings:
 - Villeneuve – May 25th
 - Gibbons – May 31st
- All 1813 responses received by July 15th

Questionnaire Results Summary

Response Distribution

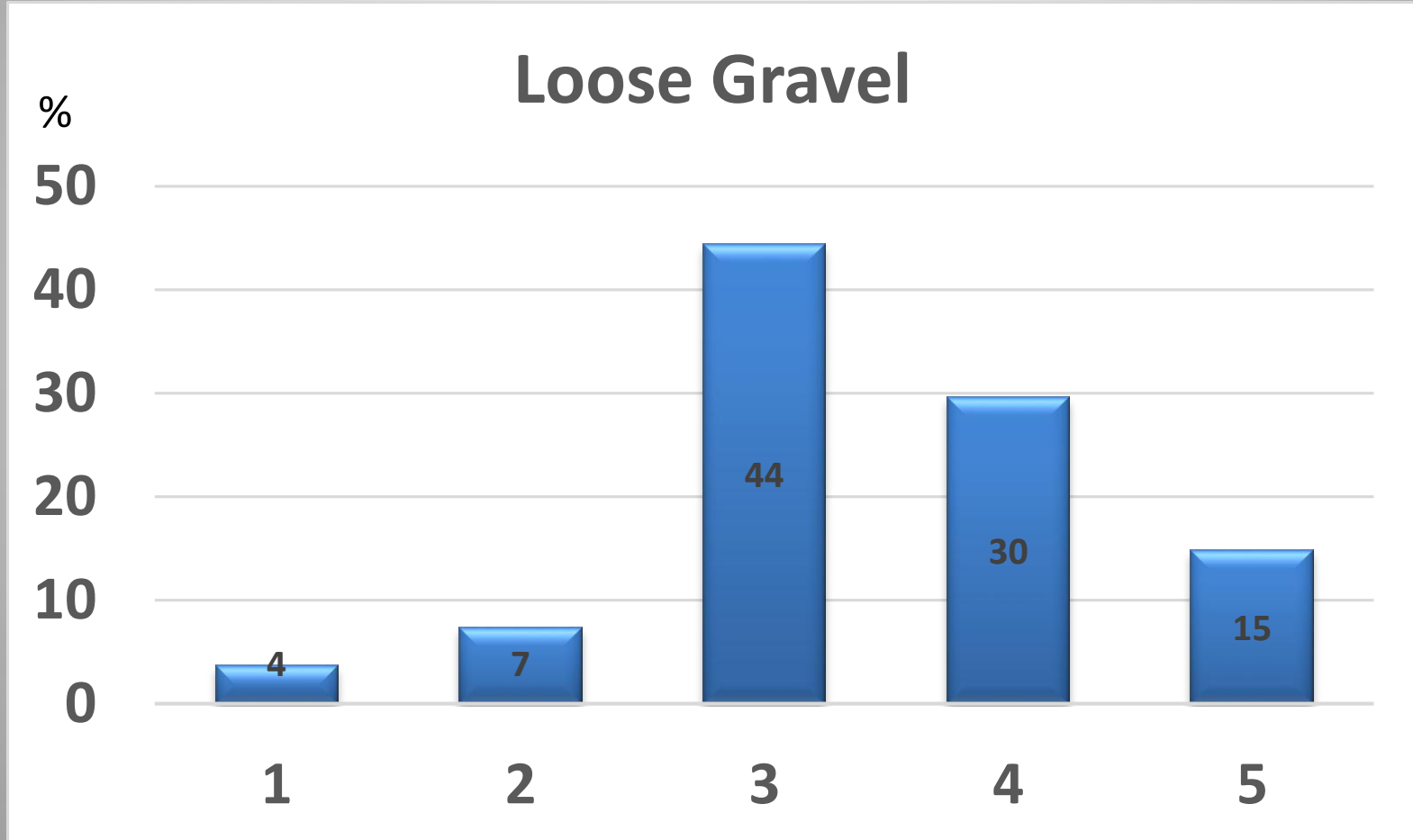


County's Operations Performance (1 of 5)



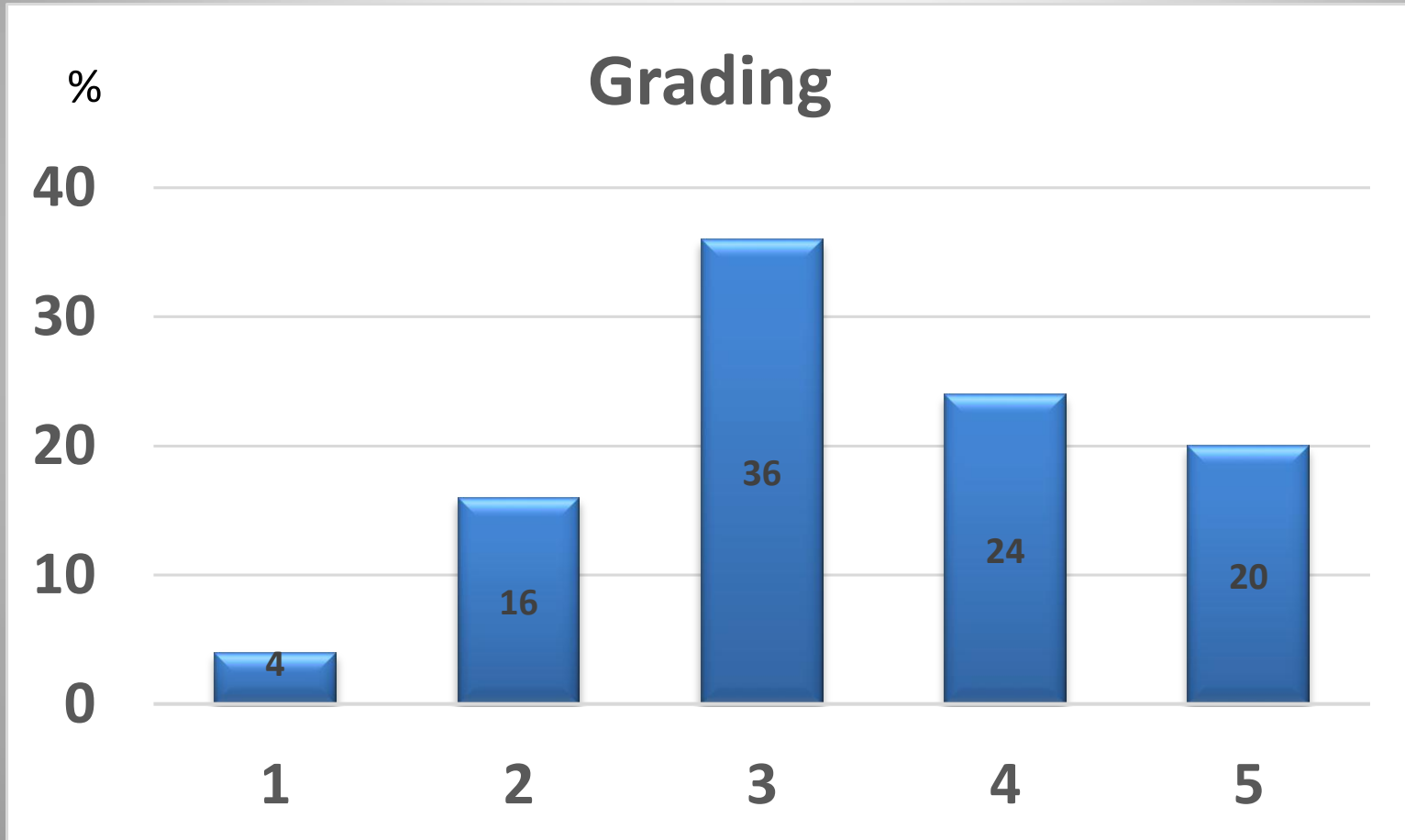
* Acceptable Satisfaction Level (i.e. 3-5) - 69 %

County's Operations Performance (2 of 5)



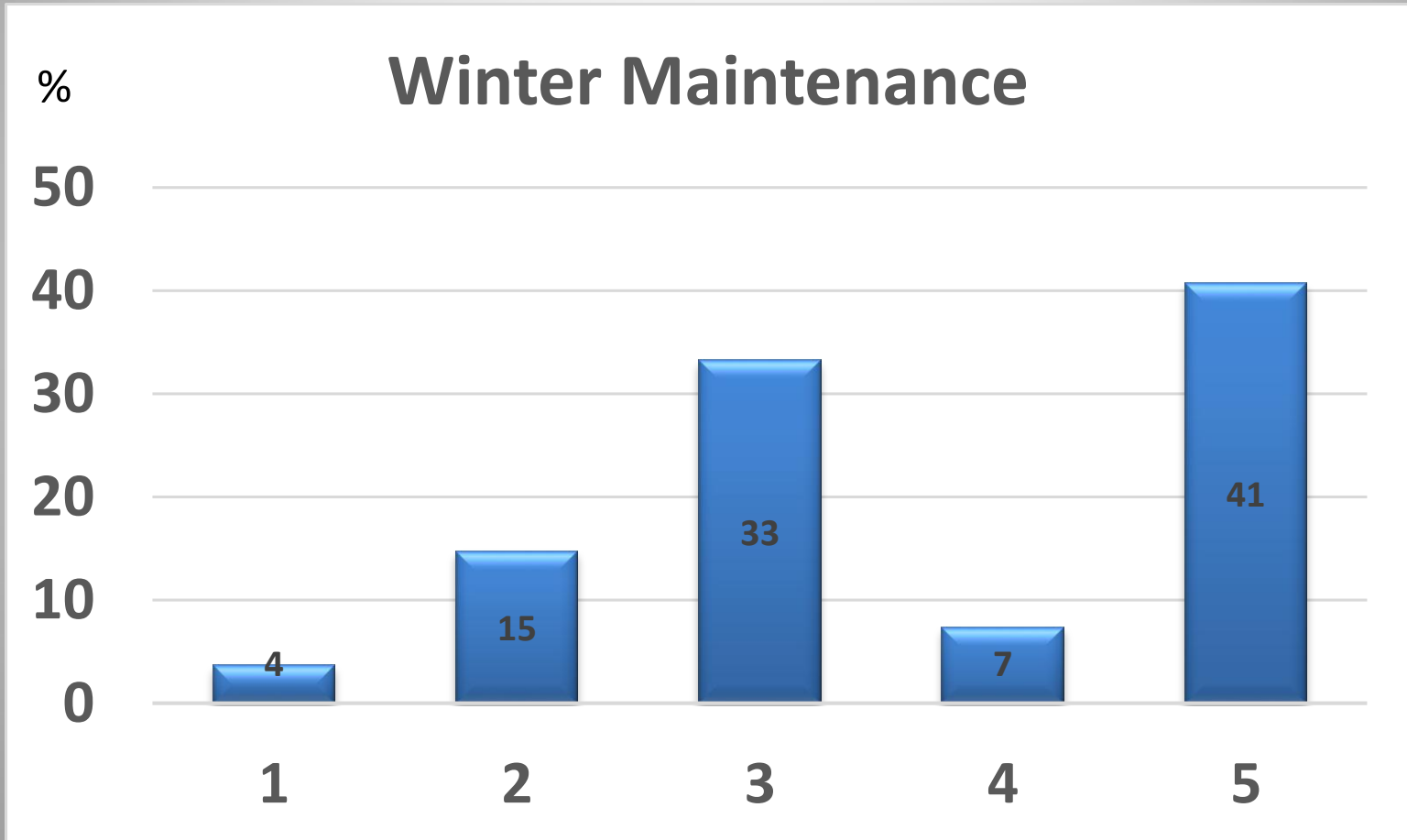
* Acceptable Satisfaction Level (i.e. 3-5) - 89 %

County's Operations Performance (3 of 5)



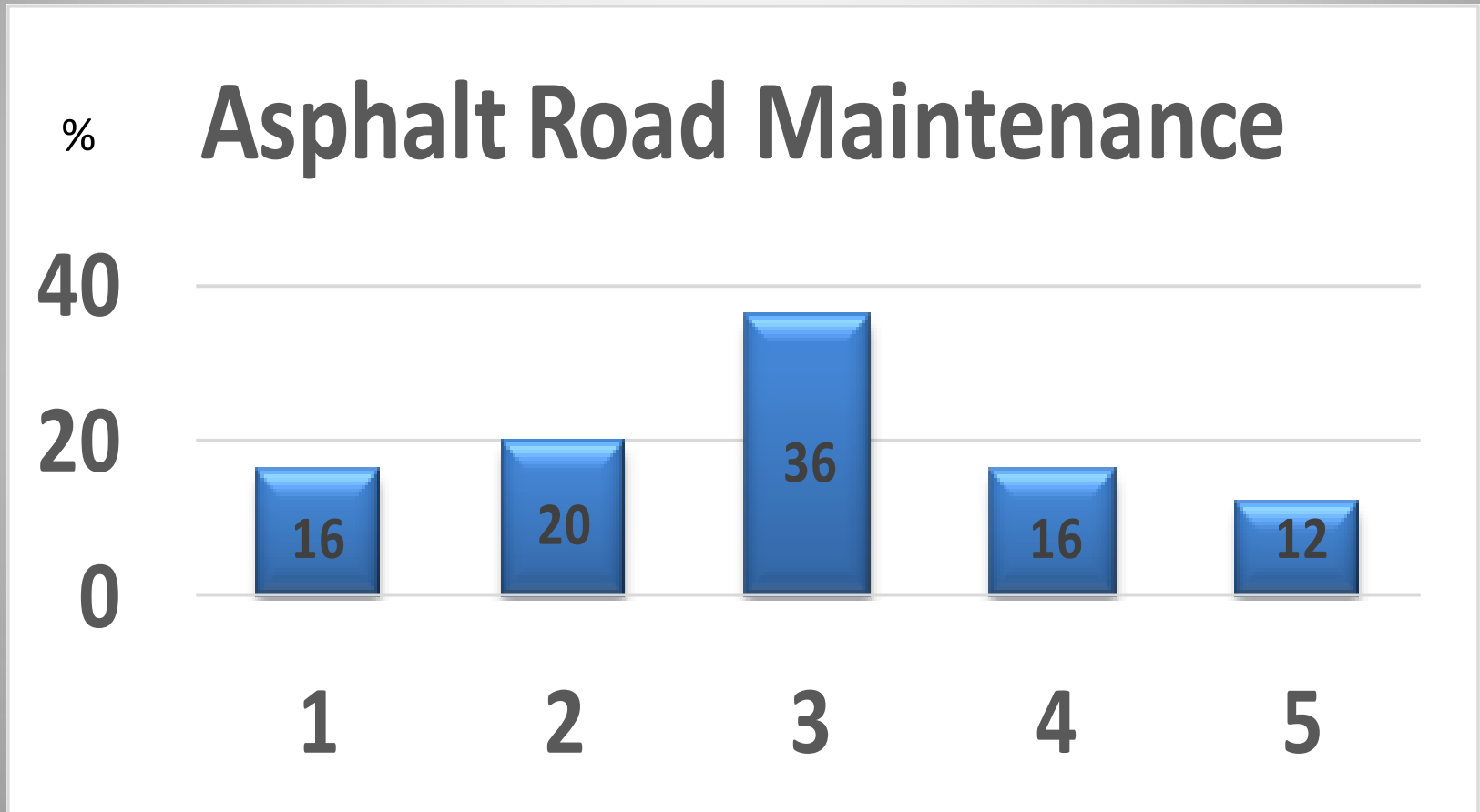
* Acceptable Satisfaction Level (i.e. 3-5) - 80 %

County's Operations Performance (4 of 5)



* Acceptable Satisfaction Level (i.e. 3-5) - 81 %

County's Operations Performance (5 of 5)



* Acceptable Satisfaction Level (i.e. 3-5) - 64 %

Main Operational Issues – Gravel

- Written comments from residents:
 - Lack of gravel and poor quality of gravel
 - Narrow flat roads with soft shoulders
 - Lack of dust suppression and slippery conditions on application

Main Operational Issues – Pavement

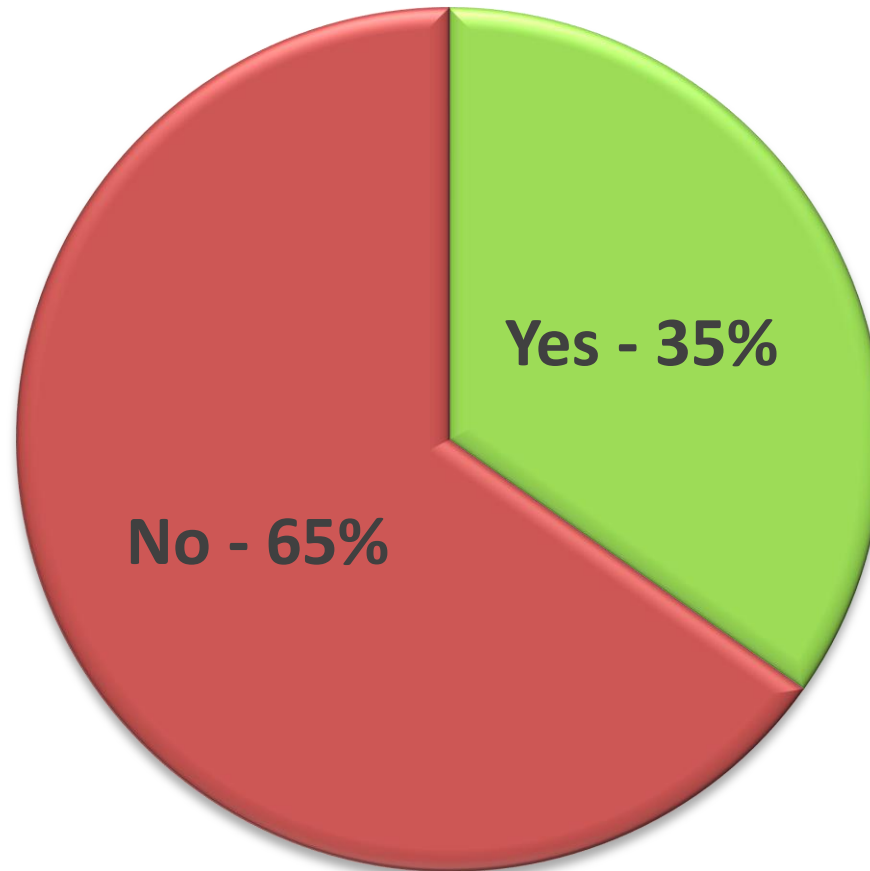
- Cracking and Potholes
 - *Photo Source – County resident*



Main Operational Issue – Gravel and Pavement

- Accelerated roadway deterioration shortly after construction or repair

Is there Sufficient Maintenance?

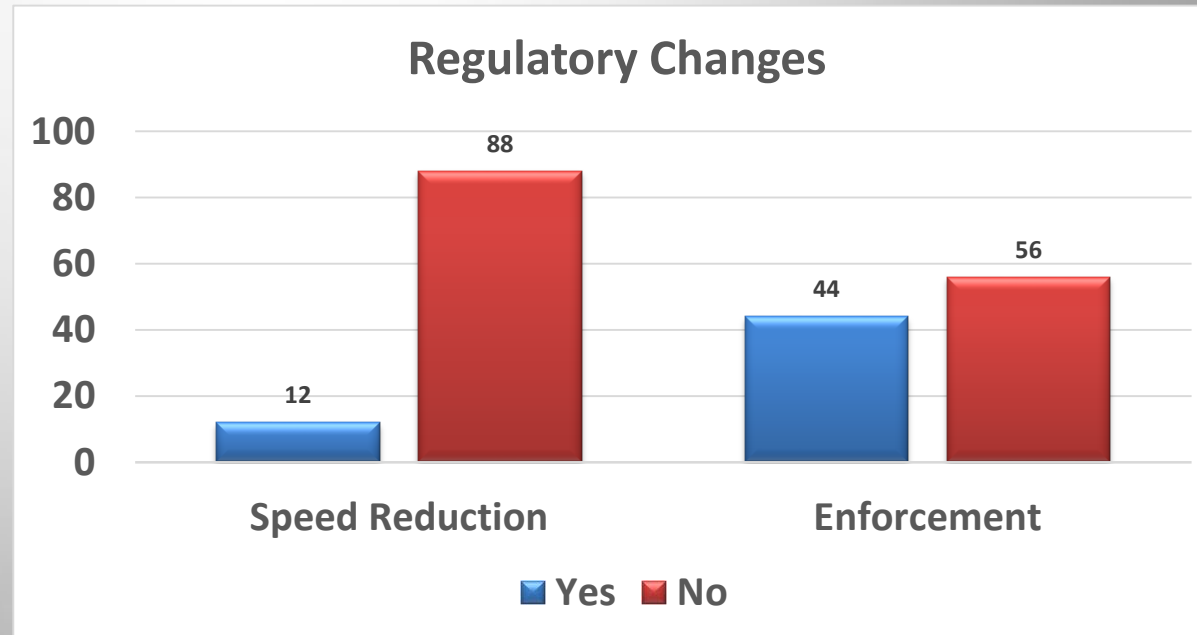


Primary Safety Issues

- Inadequate Sight Distance at Intersections
- Inadequate Road Width and Soft Shoulders
- Deteriorated Road Surface Conditions

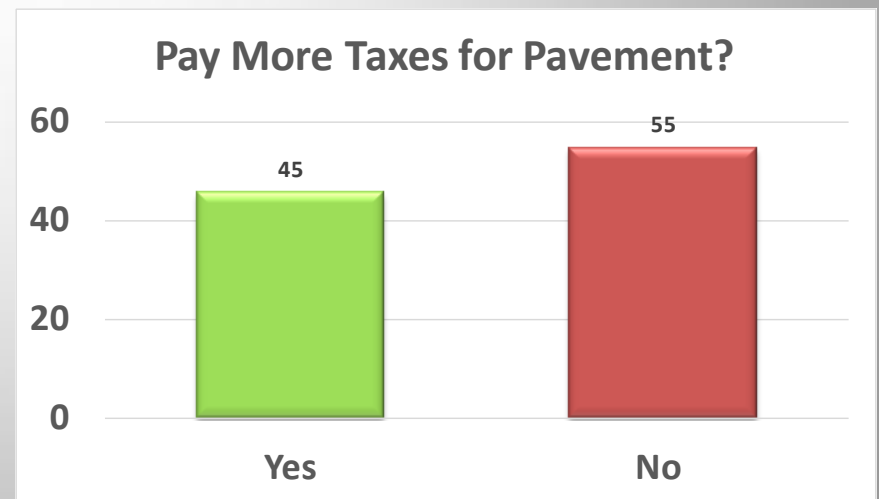
Regulatory Issues

- Vehicles travelling too fast for conditions
- Roadways not designed for the traffic
- Residents warm on increased traffic enforcement



Pay more to Upgrade

- General interest in upgrading from gravel to pavement or improved level of service
- Some interested in paying for improved LOS
- Most feel better use can be made with existing tax revenues



Common Themes and Conclusions

Traffic

- Roadways not designed for the traffic
- Functional Classification and Standards issue:
 - Local -> Collector -> Arterial
 - Too much through traffic on the local class roads
 - Indication collector class roadways are not designed and constructed to appropriate geometry and surfacing structure to collect traffic from the local roadways and distribute to the arterials
- SRIS to review functional classification policy

Maintenance Renewal and Upgrade

- As a whole, residents are somewhat satisfied with County Operations
- Room for improvement
- Surfacing structures under designed for traffic
- Existing approach not sustainable
- SRIS strategy will build in enhanced treatment strategies that will work towards infrastructure sustainability over time

Dust Control

- Excessive dust created on high traffic roads
- Existing dust suppressant not effective and slippery when wet
- Two part solution for consideration:
 - Reduce the traffic on the local gravel roadways
 - Roadway preparation before applying dust suppressant
- SRIS will address traffic within classification review and build in dust suppression treatment options in the maintenance, renewal and upgrade strategy

Safety and Regulation

- Multiple safety concerns, but three primary:
 - Inadequate sight distance at intersections
 - Inadequate road width and soft shoulders
 - Deteriorated road surface conditions
- Vehicles travel too fast and increased enforcement an option
- SRIS will address the three safety issues beginning with the roadway inspections and then the maintenance renewal and upgrade strategy
- SRIS will address other safety issues in final report

Value for Money

- Vast majority of residents would like to see improvements to road system
- Indication from residents is room for improvement and overall LOS may be improved within existing funding allocations
- SRIS will attempt to work within existing funding allocations, but will consider options that exceed if can provide a strong ROI (i.e. maximize value to taxpayers)

Discussions

