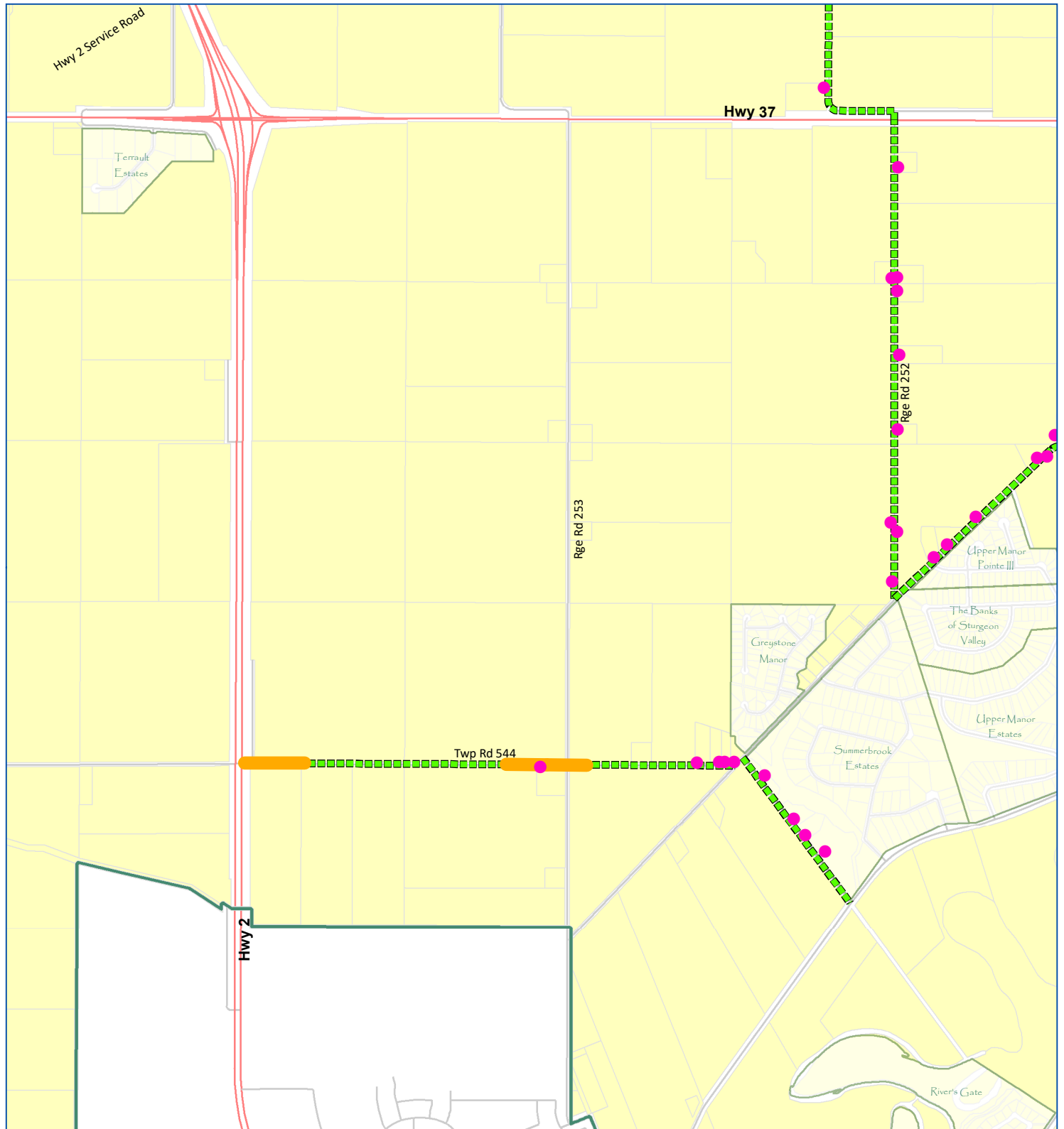


Complimentary Dust Suppression

Designated Haul Routes 2020



● Affected Residences

▬ Proposed Segments

▬ Haul Routes

Disclaimer: The information on these maps is based on the most current information available to SCGIS. The information on this map is not intended to replace engineering, financial or primary records research.
NAD 1983 10TM AEP Resource

1:26,836



Sturgeon County
Geographic Information System